

## SSA1 antibody

Catalog No: #22860

Orders: order@signalwayantibody.com

Support: tech@signalwayantibody.com

## Description

Product Name	SSA1 antibody
Host Species	Rabbit
Clonality	Polyclonal
Purification	Purified by antigen-affinity chromatography.
Applications	WB IHC IF
Species Reactivity	Hu
Immunogen Type	Recombinant protein
Immunogen Description	Recombinant protein fragment contain a sequence corresponding to a region within amino acids 254 and 452 of SSA1
Target Name	SSA1
Accession No.	Swiss-Prot:P19474Gene ID:6737
Uniprot	P19474
GeneID	6737;
Concentration	1mg/ml
Formulation	Supplied in 0.1M Tris-buffered saline with 20% Glycerol (pH7.0). 0.01% Thimerosal was added as a preservative.
Storage	Store at -20°C for long term preservation (recommended). Store at 4°C for short term use.

## Application Details

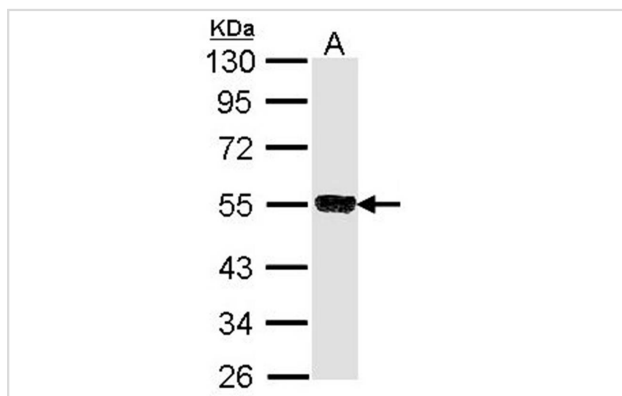
Predicted MW: 54kd

Western blotting: 1:500-1:3000

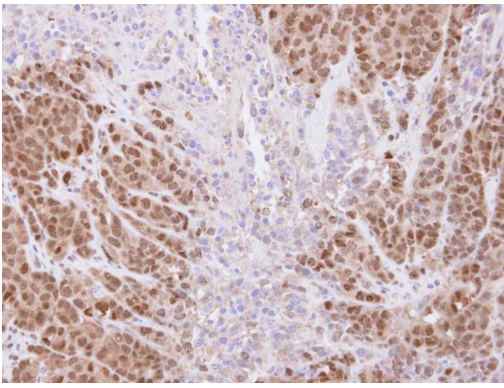
Immunohistochemistry: 1:100-1:500

Immunofluorescence: 1:100-1:200

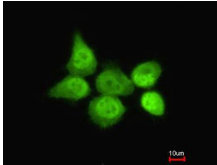
## Images



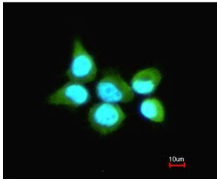
Sample (30 ug of whole cell lysate)  
A: Molt-4  
10% SDS PAGE  
Primary antibody diluted at 1: 1000



Immunohistochemical analysis of paraffin-embedded DLD-1 xenograft, using SSA1 antibody at 1: 500 dilution.



Costained with Hoechst 33342



Immunofluorescence analysis of paraformaldehyde-fixed A431, using SSA1 antibody at 1: 200 dilution.

## Background

This gene encodes a member of the tripartite motif (TRIM) family. The TRIM motif includes three zinc-binding domains, a RING, a B-box type 1 and a B-box type 2, and a coiled-coil region. The encoded protein is part of the RoSSA ribonucleoprotein, which includes a single polypeptide and one of four small RNA molecules. The RoSSA particle localizes to both the cytoplasm and the nucleus. RoSSA interacts with autoantigens in patients with Sjogren syndrome and systemic lupus erythematosus. Alternatively spliced transcript variants for this gene have been described but the full-length nature of only one has been determined. [provided by RefSeq]

Note: This product is for in vitro research use only