

SLC35E2 Antibody

Catalog No: #43365

Orders: order@signalwayantibody.comSupport: tech@signalwayantibody.com

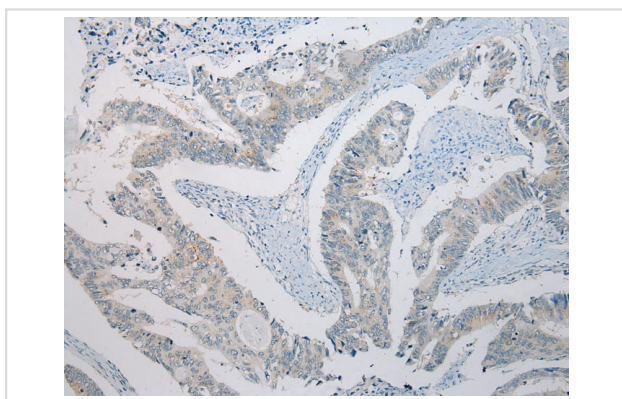
Description

Product Name	SLC35E2 Antibody
Host Species	Rabbit
Clonality	Polyclonal
Purification	Antigen affinity purification.
Applications	IHC
Species Reactivity	Hu
Specificity	The antibody detects endogenous levels of total SLC35E2 protein.
Immunogen Description	Fusion protein of human SLC35E2
Target Name	SLC35E2
Other Names	solute carrier family 35 member E2; solute carrier family 35, member E2
Accession No.	Swiss-Prot#: P0CK97 Gene ID: 9906
Uniprot	P0CK97
GeneID	9906;
Concentration	1mg/ml
Formulation	Rabbit IgG in pH7.4 PBS, 0.05% NaN ₃ , 40% Glycerol.
Storage	Store at -20°C

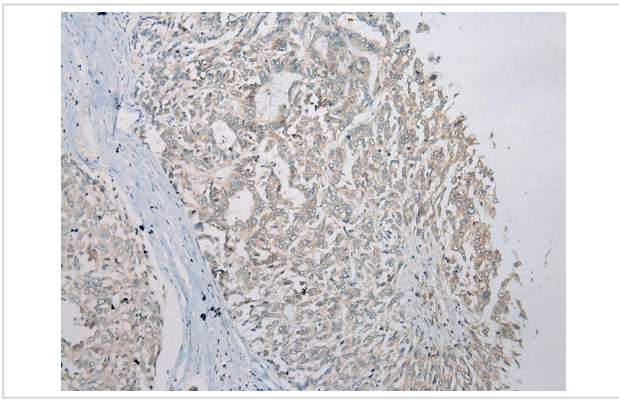
Application Details

Immunohistochemistry: 1:100-1:200

Images



Immunohistochemical analysis of paraffin-embedded Human Colorectal cancer tissue using #43365 at dilution 1/200.



Immunohistochemical analysis of paraffin-embedded Human Liver tissue using #43365 at dilution 1/200.

Background

SLC35E2 is a putative transporter.

Note: This product is for in vitro research use only