

UBE2J2 Antibody

Catalog No: #43366

Orders: order@signalwayantibody.com

Support: tech@signalwayantibody.com

Description

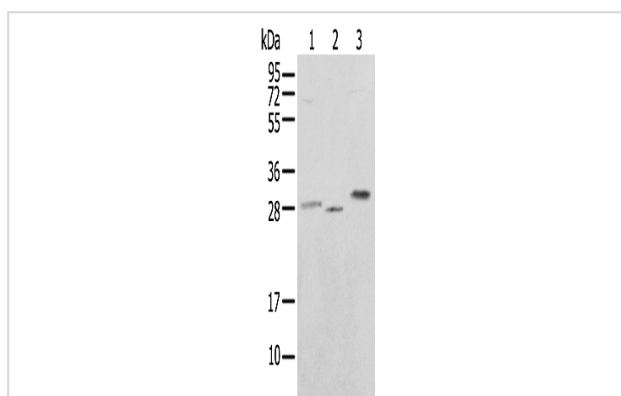
| | |
|-----------------------|---|
| Product Name | UBE2J2 Antibody |
| Host Species | Rabbit |
| Clonality | Polyclonal |
| Purification | Antigen affinity purification. |
| Applications | WB IHC |
| Species Reactivity | Hu Ms |
| Specificity | The antibody detects endogenous levels of total UBE2J2 protein. |
| Immunogen Description | Fusion protein of human UBE2J2 |
| Target Name | UBE2J2 |
| Other Names | NCUBE2; NCUBE-2; PRO2121 |
| Accession No. | Swiss-Prot#: Q8N2K1 Gene ID: 118424 |
| Uniprot | Q8N2K1 |
| GeneID | 118424; |
| Calculated MW | 29kd |
| Concentration | 1.1mg/ml |
| Formulation | Rabbit IgG in pH7.4 PBS, 0.05% NaN ₃ , 40% Glycerol. |
| Storage | Store at -20°C |

Application Details

Western blotting: 1:200-1:1000

Immunohistochemistry: 1:20-1:100

Images



Gel: 12%SDS-PAGE

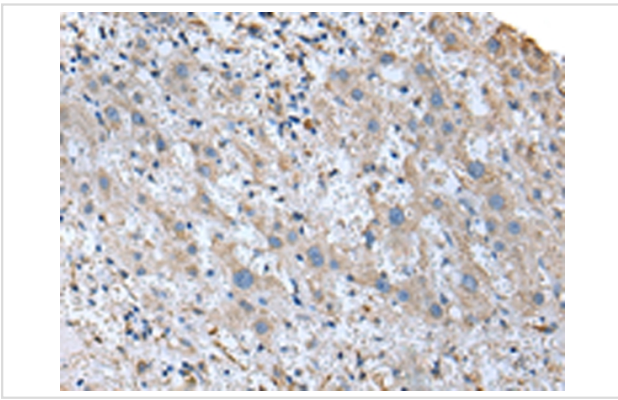
Lysate: 40 µg

Lane 1-3: 293T cell, Mouse skeletal muscle tissue and HEPG2 cell

Primary antibody: 1/250 dilution

Secondary antibody: Goat anti rabbit IgG at 1/8000 dilution

Exposure time: 3 seconds



Immunohistochemical analysis of paraffin-embedded Human liver cancer tissue using #43366 at dilution 1/20,

Background

The modification of proteins with ubiquitin is an important cellular mechanism for targeting abnormal or short-lived proteins for degradation. Ubiquitination involves at least three classes of enzymes: ubiquitin-activating enzymes, or E1s, ubiquitin-conjugating enzymes, or E2s, and ubiquitin-protein ligases, or E3s. This gene encodes a member of the E2 ubiquitin-conjugating enzyme family. This enzyme is located in the membrane of the endoplasmic reticulum.

Note: This product is for in vitro research use only