

RSPH1 Antibody

Catalog No: #43368

Orders: order@signalwayantibody.com

Support: tech@signalwayantibody.com

Description

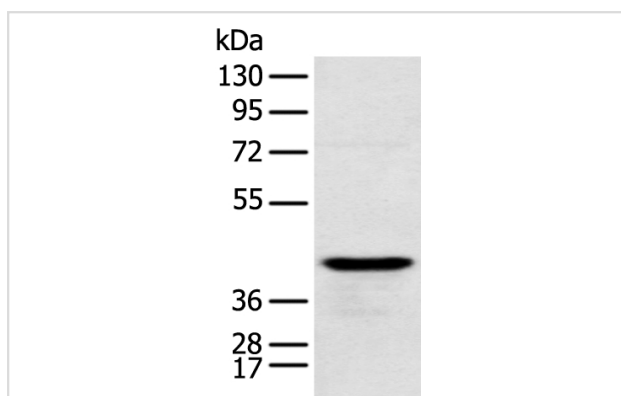
Product Name	RSPH1 Antibody
Host Species	Rabbit
Clonality	Polyclonal
Purification	Antigen affinity purification.
Applications	WB IHC
Species Reactivity	Hu
Specificity	The antibody detects endogenous levels of total RSPH1 protein.
Immunogen Description	Fusion protein of human RSPH1
Target Name	RSPH1
Other Names	CT79; TSA2; RSP44; TSGA2; RSPH10A
Accession No.	Swiss-Prot#: Q8WYR4 Gene ID: 89765
Uniprot	Q8WYR4
GeneID	89765;
Calculated MW	35kd
Concentration	0.7mg/ml
Formulation	Rabbit IgG in pH7.4 PBS, 0.05% NaN ₃ , 40% Glycerol.
Storage	Store at -20°C

Application Details

Western blotting: 1:500-1:2000

Immunohistochemistry: 1:100-1:200

Images



Gel: 8%SDS-PAGE

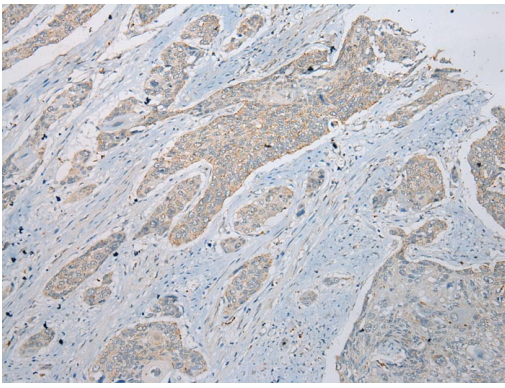
Lysate: 40 µg

Lane: Human testis tissue

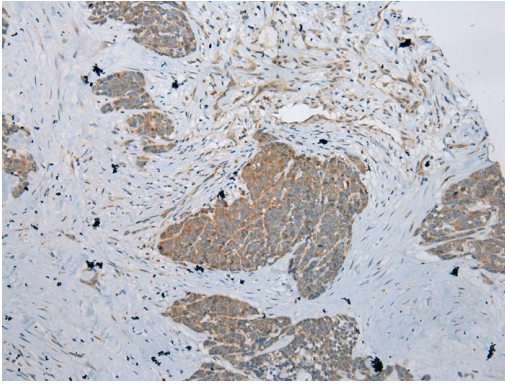
Primary antibody: 1/250 dilution

Secondary antibody: Goat anti rabbit IgG at 1/8000 dilution

Exposure time: 5 seconds



Immunohistochemical analysis of paraffin-embedded Human Esophagus tissue using #43368 at dilution 1/200,



Immunohistochemical analysis of paraffin-embedded Human Thyroid tissue using #43368 at dilution 1/200,

Background

This gene encodes a male meiotic metaphase chromosome-associated acidic protein. This gene is expressed in tissues with motile cilia or flagella, including the trachea, lungs, airway brushings, and testes. Mutations in this gene result in primary ciliary dyskinesia-24. Alternatively spliced transcript variants encoding different isoforms have been found for this gene.

Note: This product is for in vitro research use only