

ZNF248 Antibody

Catalog No: #43372

Orders: order@signalwayantibody.comSupport: tech@signalwayantibody.com

Description

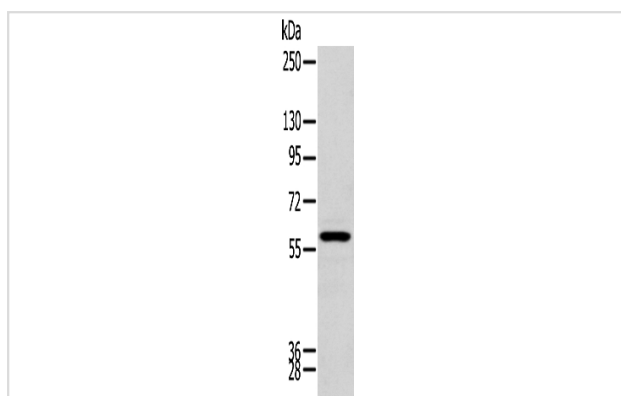
Product Name	ZNF248 Antibody
Host Species	Rabbit
Clonality	Polyclonal
Purification	Antigen affinity purification.
Applications	WB IHC
Species Reactivity	Hu
Specificity	The antibody detects endogenous levels of total ZNF248 protein.
Immunogen Description	Full length fusion protein of human ZNF248
Target Name	ZNF248
Other Names	bA162G10.3
Accession No.	Swiss-Prot#: Q8NDW4 Gene ID: 57209
Uniprot	Q8NDW4
GeneID	57209;
Calculated MW	67kd
Concentration	0.5mg/ml
Formulation	Rabbit IgG in pH7.4 PBS, 0.05% NaN ₃ , 40% Glycerol.
Storage	Store at -20°C

Application Details

Western blotting: 1:500-1:2000

Immunohistochemistry: 1:100-1:200

Images



Gel: 8%SDS-PAGE

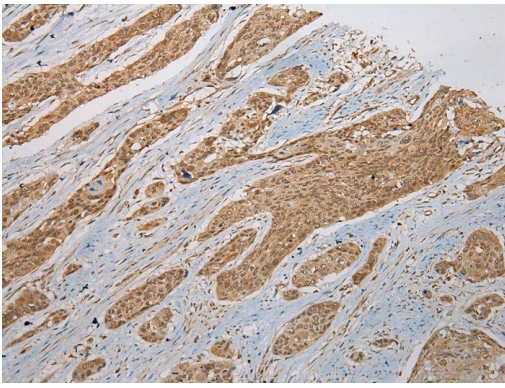
Lysate: 40 µg

Lane: Human kidney tissue

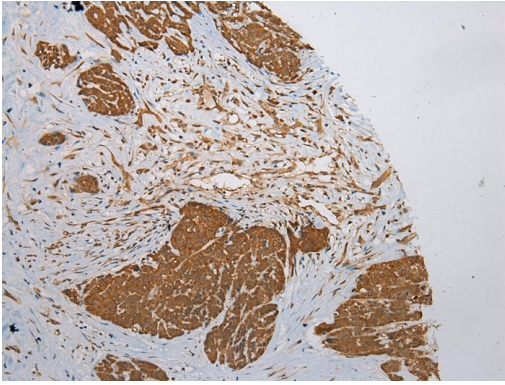
Primary antibody: 1/200 dilution

Secondary antibody: Goat anti rabbit IgG at 1/8000 dilution

Exposure time: 1 minute



Immunohistochemical analysis of paraffin-embedded Human Esophagus cancer tissue using #43372 at dilution 1/200.



Immunohistochemical analysis of paraffin-embedded Human Thyroid cancer tissue using #43372 at dilution 1/200.

Background

ZNF248 belongs to the krueppel C2H2-type zinc-finger protein family. It contains 8 C2H2-type zinc fingers and 1 KRAB domain. ZNF248 may be involved in transcriptional regulation.

Note: This product is for in vitro research use only