

## EED antibody

Catalog No: #22861

Orders: order@signalwayantibody.com

Support: tech@signalwayantibody.com

## Description

Product Name	EED antibody
Host Species	Rabbit
Clonality	Polyclonal
Purification	Purified by antigen-affinity chromatography.
Applications	WB IHC IF
Species Reactivity	Hu
Immunogen Type	Recombinant protein
Immunogen Description	Recombinant protein fragment contain a sequence corresponding to a region within amino acids 1 and 239 of EED
Target Name	EED
Accession No.	NCBI Gene ID: 8726NCBI mRNA#: NM_003797NCBI Protein#: NP_003788
Uniprot	O75530
GeneID	8726;
Concentration	1mg/ml
Formulation	Supplied in 0.1M Tris-buffered saline with 10% Glycerol (pH7.0). 0.01% Thimerosal was added as a preservative.
Storage	Store at -20°C for long term preservation (recommended). Store at 4°C for short term use.

## Application Details

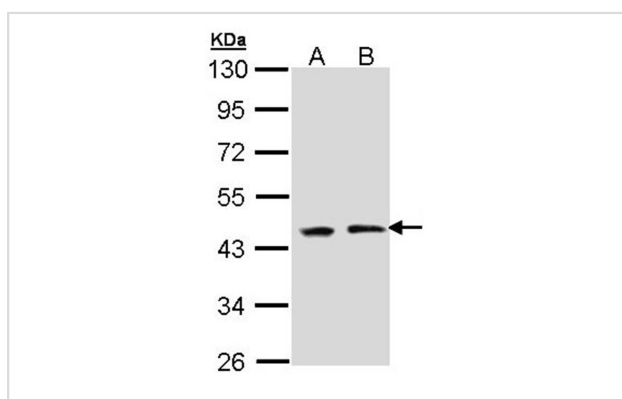
Predicted MW: 50kd

Western blotting: 1:500-1:3000

Immunohistochemistry: 1:100-1:250

Immunofluorescence: 1:100-1:200

## Images



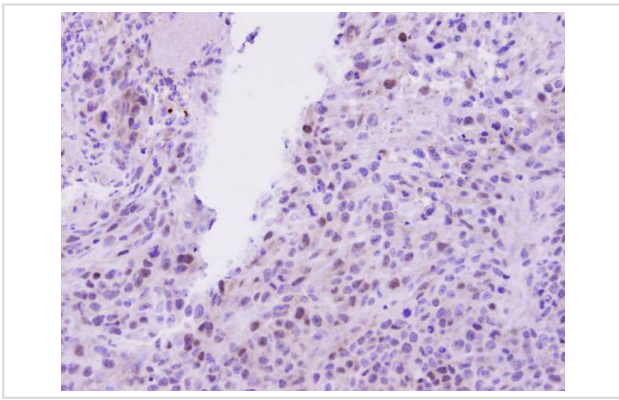
Sample (30 ug of whole cell lysate)

A: A431

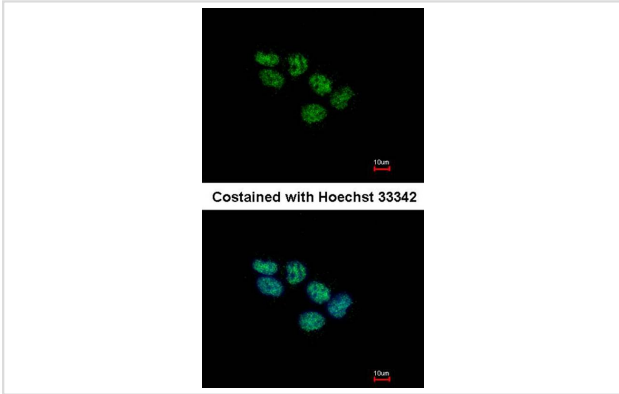
B: H1299

10% SDS PAGE

Primary antibody diluted at 1: 1000



Immunohistochemical analysis of paraffin-embedded SAS Xenograft, using EED antibody at 1: 100 dilution.



Immunofluorescence analysis of paraformaldehyde-fixed A431, using EED antibody at 1: 500 dilution.

## Background

This gene encodes a member of the Polycomb-group (PcG) family. PcG family members form multimeric protein complexes, which are involved in maintaining the transcriptional repressive state of genes over successive cell generations. This protein interacts with enhancer of zeste 2, the cytoplasmic tail of integrin beta7, immunodeficiency virus type 1 (HIV-1) MA protein, and histone deacetylase proteins. This protein mediates repression of gene activity through histone deacetylation, and may act as a specific regulator of integrin function. Two transcript variants encoding distinct isoforms have been identified for this gene. [provided by RefSeq]

Note: This product is for in vitro research use only