

## NUDT10 Antibody

Catalog No: #43375

Orders: order@signalwayantibody.com

Support: tech@signalwayantibody.com

## Description

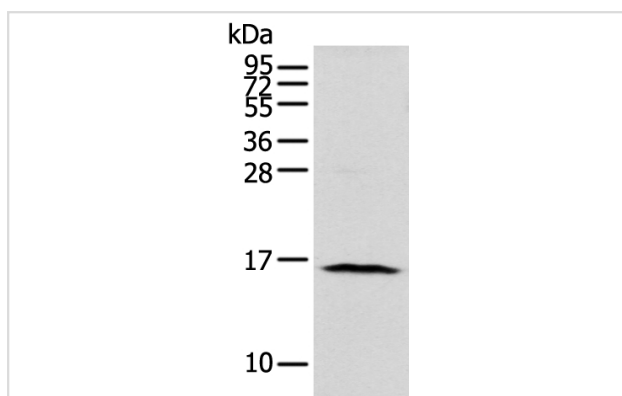
Product Name	NUDT10 Antibody
Host Species	Rabbit
Clonality	Polyclonal
Purification	Antigen affinity purification.
Applications	WB IHC
Species Reactivity	Hu
Specificity	The antibody detects endogenous levels of total NUDT10 protein.
Immunogen Description	Full length fusion protein of human NUDT10
Target Name	NUDT10
Other Names	APS2; DIPP3a; DIPP3-alpha
Accession No.	Swiss-Prot#: Q8NFP7 Gene ID: 170685
Uniprot	Q8NFP7
GeneID	170685;
Calculated MW	19kd
Concentration	3.2mg/ml
Formulation	Rabbit IgG in pH7.4 PBS, 0.05% NaN <sub>3</sub> , 40% Glycerol.
Storage	Store at -20°C

## Application Details

Western blotting: 1:1000-1:5000

Immunohistochemistry: 1:100-1:200

## Images



Gel: 12%SDS-PAGE

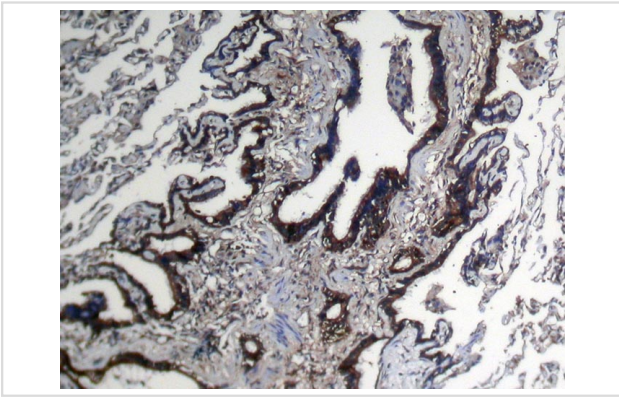
Lysate: 40 µg

Lane: 293T cell

Primary antibody: 1/800 dilution

Secondary antibody: Goat anti rabbit IgG at 1/8000 dilution

Exposure time: 1 minute



Immunohistochemical analysis of paraffin-embedded Human Lung tissue using #43375 at dilution 1/200.

## Background

This gene is a member of the nudix (nucleoside diphosphate linked moiety X)-type motif containing family. The encoded protein is a phosphohydrolase and may regulate the turnover of diphosphoinositol polyphosphates. The turnover of these high-energy diphosphoinositol polyphosphates represents a molecular switching activity with important regulatory consequences. Molecular switching by diphosphoinositol polyphosphates may contribute to the regulation of intracellular trafficking. In some populations putative prostate cancer susceptibility alleles have been identified for this gene.

Note: This product is for in vitro research use only