

## GSTM2 Antibody

Catalog No: #43377

Orders: [order@signalwayantibody.com](mailto:order@signalwayantibody.com)Support: [tech@signalwayantibody.com](mailto:tech@signalwayantibody.com)

## Description

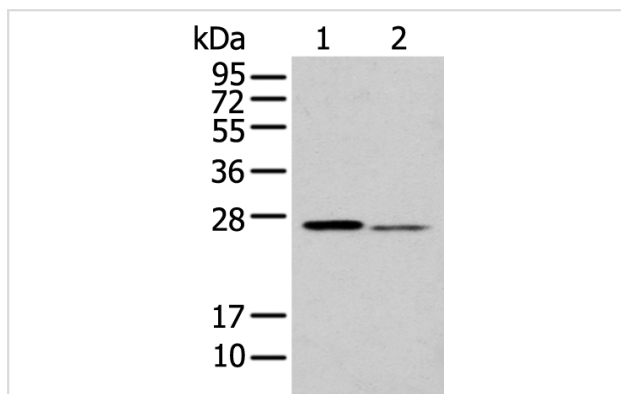
Product Name	GSTM2 Antibody
Host Species	Rabbit
Clonality	Polyclonal
Purification	Antigen affinity purification.
Applications	WB IHC
Species Reactivity	Hu Ms
Specificity	The antibody detects endogenous levels of total GSTM2 protein.
Immunogen Description	Full length fusion protein of human GSTM2
Target Name	GSTM2
Other Names	GST4; GSTM; GTHMUS; GSTM2-2
Accession No.	Swiss-Prot#: P28161 Gene ID: 2946
Uniprot	P28161
GeneID	2946;
Calculated MW	26kd
Concentration	0.9mg/ml
Formulation	Rabbit IgG in pH7.4 PBS, 0.05% NaN <sub>3</sub> , 40% Glycerol.
Storage	Store at -20°C

## Application Details

Western blotting: 1:200-1:1000

Immunohistochemistry: 1:20-1:100

## Images



Gel: 12%SDS-PAGE

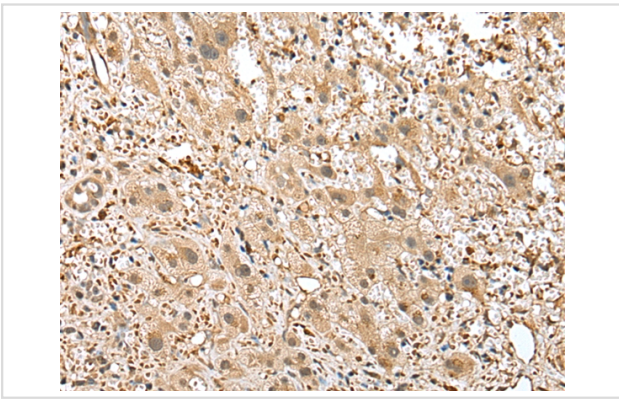
Lysate: 40 µg

Lane 1-2: Mouse liver tissue and 293T cell

Primary antibody: 1/200 dilution

Secondary antibody: Goat anti rabbit IgG at 1/8000 dilution

Exposure time: 10 seconds



Immunohistochemical analysis of paraffin-embedded Human liver cancer tissue using #43377 at dilution 1/25,

## Background

Cytosolic and membrane-bound forms of glutathione S-transferase are encoded by two distinct supergene families. At present, eight distinct classes of the soluble cytoplasmic mammalian glutathione S-transferases have been identified: alpha, kappa, mu, omega, pi, sigma, theta and zeta. This gene encodes a glutathione S-transferase that belongs to the mu class. The mu class of enzymes functions in the detoxification of electrophilic compounds, including carcinogens, therapeutic drugs, environmental toxins and products of oxidative stress, by conjugation with glutathione.

Note: This product is for in vitro research use only