

PLA2G12A Antibody

Catalog No: #43382

Orders: order@signalwayantibody.comSupport: tech@signalwayantibody.com

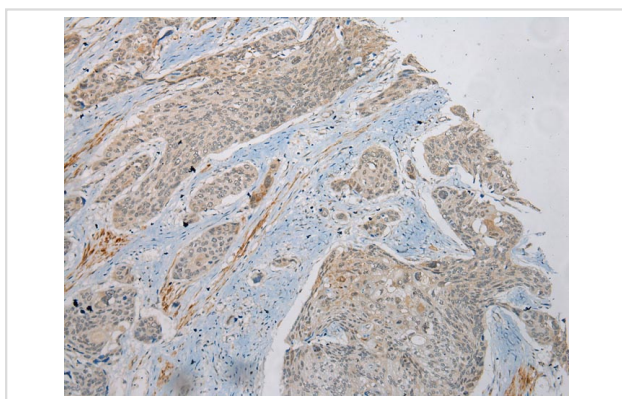
Description

Product Name	PLA2G12A Antibody
Host Species	Rabbit
Clonality	Polyclonal
Purification	Antigen affinity purification.
Applications	IHC
Species Reactivity	Hu
Specificity	The antibody detects endogenous levels of total PLA2G12A protein.
Immunogen Description	Fusion protein of human PLA2G12A
Target Name	PLA2G12A
Other Names	GXII; ROSSY; PLA2G12
Accession No.	Swiss-Prot#: Q9BZM1 Gene ID: 81579
Uniprot	Q9BZM1
GeneID	81579;
Concentration	0.8mg/ml
Formulation	Rabbit IgG in pH7.4 PBS, 0.05% NaN ₃ , 40% Glycerol.
Storage	Store at -20°C

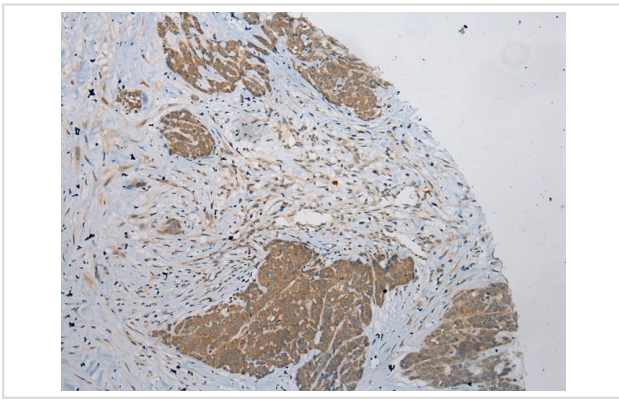
Application Details

Immunohistochemistry: 1:100-1:200

Images



Immunohistochemical analysis of paraffin-embedded Human Esophagus cancer tissue using #43382 at dilution 1/200,



Immunohistochemical analysis of paraffin-embedded Human Thyroid cancer tissue using #43382 at dilution 1/200,

Background

Secreted phospholipase A2 (sPLA2) enzymes liberate arachidonic acid from phospholipids for production of eicosanoids and exert a variety of physiologic and pathologic effects. Group XII sPLA2s, such as PLA2G12A, have relatively low specific activity and are structurally and functionally distinct from other sPLA2s (Gelb et al., 2000 [PubMed 11031251]).

Note: This product is for in vitro research use only