

COMMD10 Antibody

Catalog No: #43383

Orders: order@signalwayantibody.comSupport: tech@signalwayantibody.com

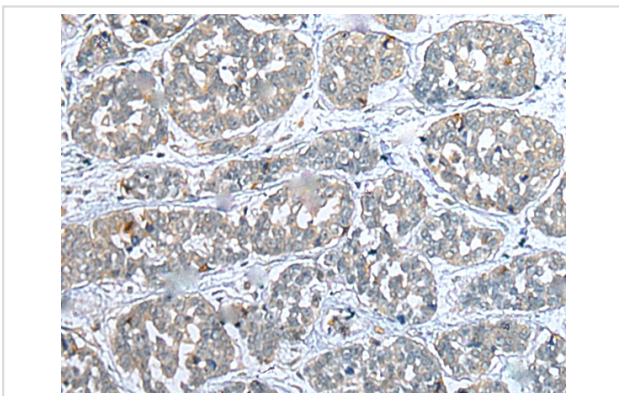
Description

Product Name	COMMD10 Antibody
Host Species	Rabbit
Clonality	Polyclonal
Purification	Antigen affinity purification.
Applications	IHC
Species Reactivity	Hu
Specificity	The antibody detects endogenous levels of total COMMD10 protein.
Immunogen Description	Fusion protein of human COMMD10
Target Name	COMMD10
Other Names	PTD002
Accession No.	Swiss-Prot#: Q9Y6G5Gene ID: 51397
Uniprot	Q9Y6G5
GeneID	51397;
Concentration	0.9mg/ml
Formulation	Rabbit IgG in pH7.4 PBS, 0.05% NaN ₃ , 40% Glycerol.
Storage	Store at -20°C

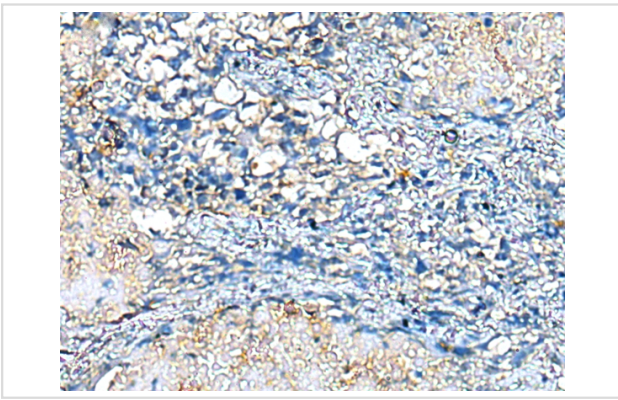
Application Details

Immunohistochemistry: 1:20-1:100

Images



Immunohistochemical analysis of paraffin-embedded Human esophagus cancer tissue using #43383 at dilution 1/25.



Immunohistochemical analysis of paraffin-embedded Human lung cancer tissue using #43383 at dilution 1/25.

Background

The COMMD family represents a group of evolutionary conserved proteins that share a common COMM domain at their extreme C-terminus, which provides an interface for protein-protein interactions. COMMD10 (COMM domain containing 10), also known as PTD002 or HSPC305, is a 202 amino acid protein that belongs to the COMMD family and contains one COMM domain. The gene encoding COMMD10 maps to human chromosome 5, which contains 181 million base pairs and comprises nearly 6% of the human genome. Deletion of the p arm of chromosome 5 leads to Cri du chat syndrome, while deletion of the q arm or of chromosome 5 altogether is common in therapy-related acute myelogenous leukemias and myelodysplastic syndrome. May modulate activity of cullin-RING E3 ubiquitin ligase (CRL) complexes (PubMed:21778237). May down-regulate activation of NF-kappa-B.

Note: This product is for in vitro research use only