

## TINAGL1 Antibody

Catalog No: #43386

Orders: [order@signalwayantibody.com](mailto:order@signalwayantibody.com)Support: [tech@signalwayantibody.com](mailto:tech@signalwayantibody.com)

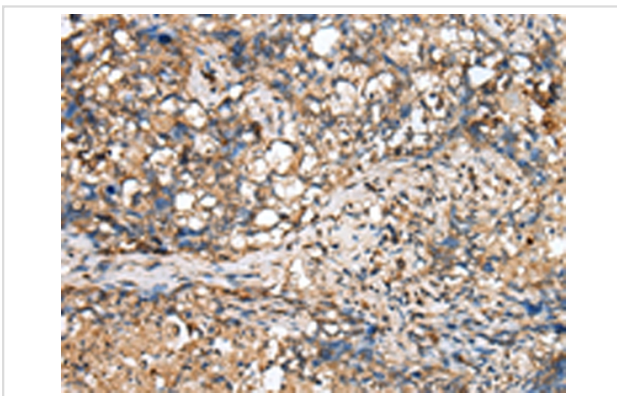
## Description

Product Name	TINAGL1 Antibody
Host Species	Rabbit
Clonality	Polyclonal
Purification	Antigen affinity purification.
Applications	IHC
Species Reactivity	Hu
Specificity	The antibody detects endogenous levels of total TINAGL1 protein.
Immunogen Description	Fusion protein of human TINAGL1
Target Name	TINAGL1
Other Names	ARG1; LCN7; LIECG3; TINAGRP
Accession No.	Swiss-Prot#: Q9GZM7 Gene ID: 64129
Uniprot	Q9GZM7
GeneID	64129;
Concentration	0.8mg/ml
Formulation	Rabbit IgG in pH7.4 PBS, 0.05% NaN <sub>3</sub> , 40% Glycerol.
Storage	Store at -20°C

## Application Details

Immunohistochemistry: 1:20-1:100

## Images



Immunohistochemical analysis of paraffin-embedded Human lung cancer tissue using #43386 at dilution 1/25,

## Background

The protein encoded by this gene is similar in sequence to tubulointerstitial nephritis antigen, a secreted glycoprotein that is recognized by antibodies in some types of immune-related tubulointerstitial nephritis. Three transcript variants encoding different isoforms have been found for this gene.

---

Note: This product is for in vitro research use only