

## PRTFDC1 Antibody

Catalog No: #43388

Orders: [order@signalwayantibody.com](mailto:order@signalwayantibody.com)Support: [tech@signalwayantibody.com](mailto:tech@signalwayantibody.com)

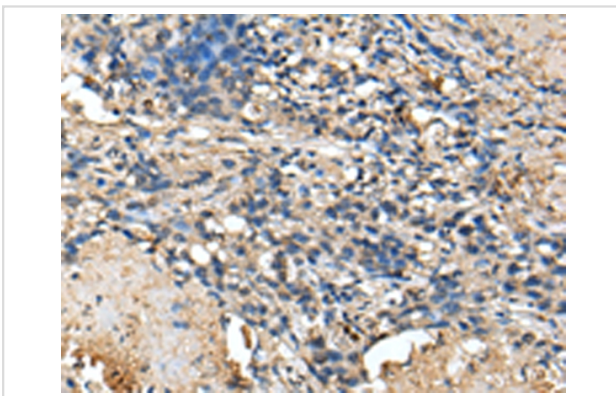
## Description

Product Name	PRTFDC1 Antibody
Host Species	Rabbit
Clonality	Polyclonal
Purification	Antigen affinity purification.
Applications	IHC
Species Reactivity	Hu
Specificity	The antibody detects endogenous levels of total PRTFDC1 protein.
Immunogen Description	Full length fusion protein of human PRTFDC1
Target Name	PRTFDC1
Other Names	HHGP
Accession No.	Swiss-Prot#: Q9NRG1 Gene ID: 56952
Uniprot	Q9NRG1
GeneID	56952;
Concentration	0.7mg/ml
Formulation	Rabbit IgG in pH7.4 PBS, 0.05% NaN <sub>3</sub> , 40% Glycerol.
Storage	Store at -20°C

## Application Details

Immunohistochemistry: 1:20-1:100

## Images



Immunohistochemical analysis of paraffin-embedded Human lung cancer tissue using #43388 at dilution 1/25,

## Background

PRTFDC1 (phosphoribosyltransferase domain-containing protein 1), also known as HHGP, is a 225 amino acid protein that belongs to the purine/pyrimidine phosphoribosyltransferase family. The functions of PRTFDC1 are not well understood; however it has been suggested that it is frequently silenced in oral squamous-cell carcinomas by aberrant promoter hypermethylation. Conserved in vertebrates, PRTFDC1 is suggested to be a possible tumor-suppressor. PRTFDC1 is encoded by a gene which maps to chromosome 10. Spanning nearly 135 million base pairs, chromosome 10 makes up approximately 4.5% of the total DNA in cells and encodes nearly 1,200 genes. Three isoforms of PRTFDC1 exist due to alternative

splicing events. Has low, barely detectable phosphoribosyltransferase activity (in vitro). Binds GMP, IMP and alpha-D-5-phosphoribosyl 1-pyrophosphate (PRPP). Is not expected to contribute to purine metabolism or GMP salvage.

---

Note: This product is for in vitro research use only