

UBE2U Antibody

Catalog No: #43389

Orders: order@signalwayantibody.comSupport: tech@signalwayantibody.com

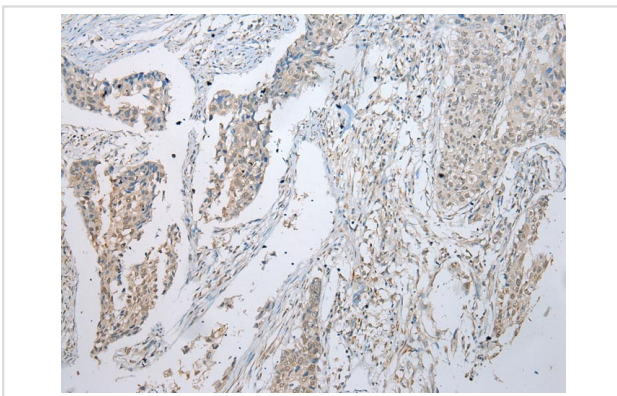
Description

Product Name	UBE2U Antibody
Host Species	Rabbit
Clonality	Polyclonal
Purification	Antigen affinity purification.
Applications	IHC
Species Reactivity	Hu
Specificity	The antibody detects endogenous levels of total UBE2U protein.
Immunogen Description	Fusion protein of human UBE2U
Target Name	UBE2U
Other Names	MGC35130; RP4-636O23.1; UBE2U; Ubiquitin carrier protein U
Accession No.	Swiss-Prot#: Q5VVX9Gene ID: 148581
Uniprot	Q5VVX9
GeneID	148581;
Concentration	1.1mg/ml
Formulation	Rabbit IgG in pH7.4 PBS, 0.05% NaN ₃ , 40% Glycerol.
Storage	Store at -20°C

Application Details

Immunohistochemistry: 1:100-1:200

Images



Immunohistochemical analysis of paraffin-embedded Human Lung cancer tissue using #43389 at dilution 1/200,

Background

UBE2U (ubiquitin-conjugating enzyme E2U) is a 321 amino acid E2 ubiquitin conjugating enzyme that catalyzes the covalent attachment of ubiquitin to other proteins. Existing as two alternatively spliced isoforms, UBE2U is encoded by a gene located on human chromosome 1, which spans 260 million base pairs, contains over 3,000 genes and comprises nearly 8% of the human genome.

Note: This product is for in vitro research use only