

LYPLA2 Antibody

Catalog No: #43391

Orders: order@signalwayantibody.comSupport: tech@signalwayantibody.com

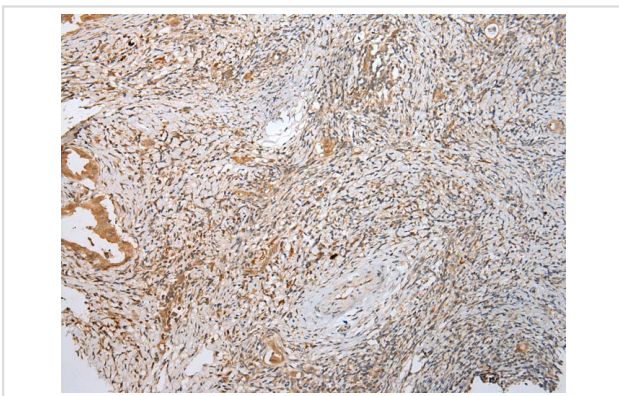
Description

Product Name	LYPLA2 Antibody
Host Species	Rabbit
Clonality	Polyclonal
Purification	Antigen affinity purification.
Applications	IHC
Species Reactivity	Hu
Specificity	The antibody detects endogenous levels of total LYPLA2 protein.
Immunogen Description	Full length fusion protein of human LYPLA2
Target Name	LYPLA2
Other Names	APT2; APT-2; DJ886K2.4
Accession No.	Swiss-Prot#: O95372Gene ID: 11313
Uniprot	O95372
GeneID	11313;
Concentration	0.9mg/ml
Formulation	Rabbit IgG in pH7.4 PBS, 0.05% NaN ₃ , 40% Glycerol.
Storage	Store at -20°C

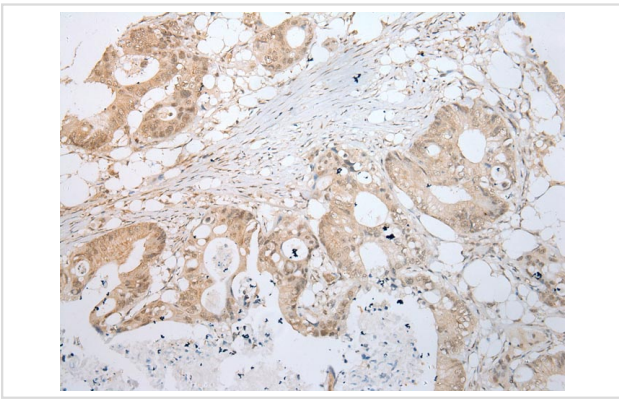
Application Details

Immunohistochemistry: 1:100-1:200

Images



Immunohistochemical analysis of paraffin-embedded Human Cervical cancer tissue using #43391 at dilution 1/100,



Immunohistochemical analysis of paraffin-embedded Human Colorectal cancer tissue using #43391 at dilution 1/100,

Background

Lysophospholipases are enzymes that act on biological membranes to regulate the multifunctional lysophospholipids. There are alternatively spliced transcript variants described for this gene but the full length nature is not known yet.

Note: This product is for in vitro research use only