

## METTL7A Antibody

Catalog No: #43392

Orders: [order@signalwayantibody.com](mailto:order@signalwayantibody.com)Support: [tech@signalwayantibody.com](mailto:tech@signalwayantibody.com)

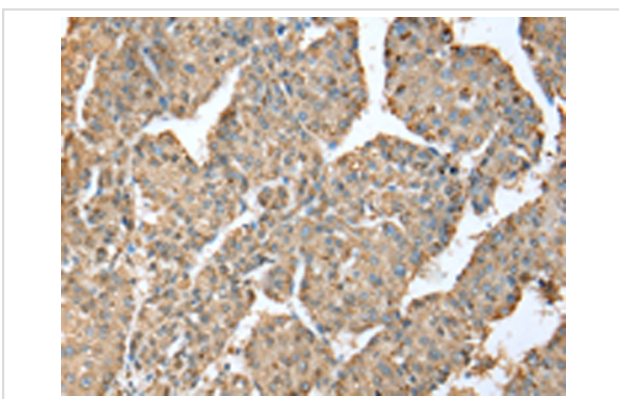
## Description

Product Name	METTL7A Antibody
Host Species	Rabbit
Clonality	Polyclonal
Purification	Antigen affinity purification.
Applications	IHC
Species Reactivity	Hu
Specificity	The antibody detects endogenous levels of total METTL7A protein.
Immunogen Description	Fusion protein of human METTL7A
Target Name	METTL7A
Other Names	AAM-B
Accession No.	Swiss-Prot#: Q9H8H3Gene ID: 25840
Uniprot	Q9H8H3
GeneID	25840;
Concentration	0.5mg/ml
Formulation	Rabbit IgG in pH7.4 PBS, 0.05% NaN <sub>3</sub> , 40% Glycerol.
Storage	Store at -20°C

## Application Details

Immunohistochemistry: 1:20-1:100

## Images



Immunohistochemical analysis of paraffin-embedded Human liver cancer tissue using #43392 at dilution 1/25,

## Background

METTL7A (methyltransferase like 7A), also known as AAM-B, is a 244 amino acid protein that is thought to function as a methyltransferase and is encoded by a gene which maps to chromosome 12. Encoding over 1,100 genes, chromosome 12 comprises nearly 4.5% of the human genome and is associated with a number of skeletal deformities, including hypochondrogenesis, achondrogenesis and Kniest dysplasia. Chromosome 12 is also home to both a homeobox gene cluster which encodes crucial transcription factors for morphogenesis, and a natural killer complex gene cluster encoding C-type lectin proteins which mediate the NK cell response to MHC I interaction. Additionally, Trisomy 12p (three copies of the p arm of

chromosome 12) leads to facial developmental defects, seizure disorders and a host of other symptoms varying in severity depending on the extent of mosaicism.

---

Note: This product is for in vitro research use only