

ABCC2 Antibody

Catalog No: #43399

Orders: order@signalwayantibody.comSupport: tech@signalwayantibody.com

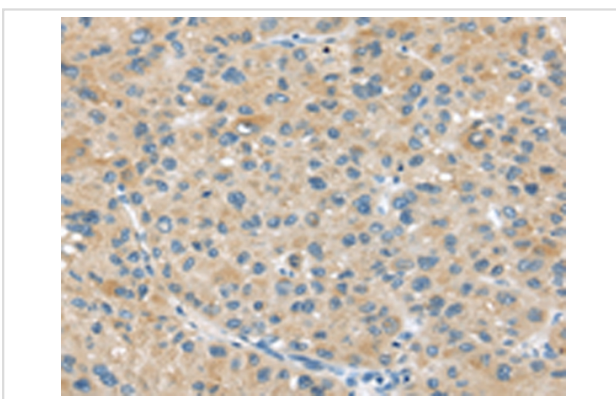
Description

Product Name	ABCC2 Antibody
Host Species	Rabbit
Clonality	Polyclonal
Purification	Antigen affinity purification.
Applications	IHC
Species Reactivity	Hu
Specificity	The antibody detects endogenous levels of total ABCC2 protein.
Immunogen Description	Synthetic peptide of human ABCC2
Target Name	ABCC2
Other Names	DJS; MRP2; cMRP; ABC30; CMOAT
Accession No.	Swiss-Prot#: Q92887 Gene ID: 1244
Uniprot	Q92887
GeneID	1244;
Concentration	2.9mg/ml
Formulation	Rabbit IgG in pH7.4 PBS, 0.05% NaN ₃ , 40% Glycerol.
Storage	Store at -20°C

Application Details

Immunohistochemistry: 1:20-1:100

Images



Immunohistochemical analysis of paraffin-embedded Human liver cancer tissue using #43399 at dilution 1/45,

Background

The protein encoded by this gene is a member of the superfamily of ATP-binding cassette (ABC) transporters. ABC proteins transport various molecules across extra- and intra-cellular membranes. ABC genes are divided into seven distinct subfamilies (ABC1, MDR/TAP, MRP, ALD, OABP, GCN20, White). This protein is a member of the MRP subfamily which is involved in multi-drug resistance. This protein is expressed in the canalicular (apical) part of the hepatocyte and functions in biliary transport. Substrates include anticancer drugs such as vinblastine; therefore, this protein appears to contribute to drug resistance in mammalian cells. Several different mutations in this gene have been observed in patients with

Dubin-Johnson syndrome (DJS), an autosomal recessive disorder characterized by conjugated hyperbilirubinemia.

Note: This product is for in vitro research use only