

## MMP24 Antibody

Catalog No: #43400

Orders: order@signalwayantibody.com

Support: tech@signalwayantibody.com

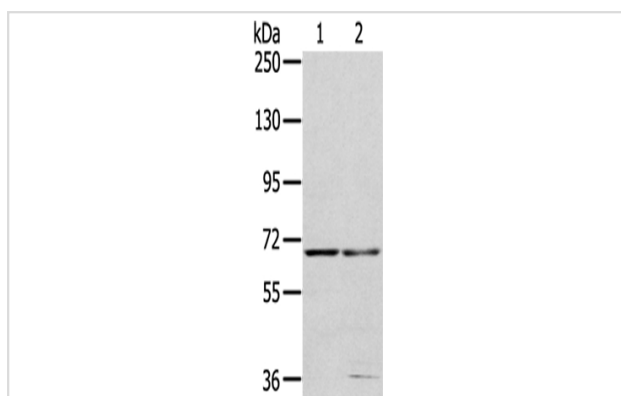
## Description

Product Name	MMP24 Antibody
Host Species	Rabbit
Clonality	Polyclonal
Purification	Antigen affinity purification.
Applications	WB
Species Reactivity	Hu Ms Rt
Specificity	The antibody detects endogenous levels of total MMP24 protein.
Immunogen Type	peptide
Immunogen Description	Synthetic peptide of human MMP24
Target Name	MMP24
Other Names	MMP25; MMP-24; MT5MMP; MTMMP5; MT-MMP5; MT5-MMP; MT-MMP 5
Accession No.	Swiss-Prot#: Q9Y5R2 Gene ID: 10893
Uniprot	Q9Y5R2
GeneID	10893;
Calculated MW	73kd
Concentration	1.3mg/ml
Formulation	Rabbit IgG in pH7.4 PBS, 0.05% NaN <sub>3</sub> , 40% Glycerol.
Storage	Store at -20°C

## Application Details

Western blotting: 1:200-1:1000

## Images



Gel: 6%SDS-PAGE  
 Lysate: 40 µg  
 Lane 1-2: 293T cells, HepG2 cells,  
 Primary antibody: 1/200 dilution  
 Secondary antibody: Goat anti rabbit IgG at 1/8000 dilution  
 Exposure time: 40 seconds

## Background

Proteins of the matrix metalloproteinase (MMP) family are involved in the breakdown of extracellular matrix in normal physiological processes, such as embryonic development, reproduction, and tissue remodeling, as well as in disease processes, such as arthritis and metastasis. Most MMP's are

secreted as inactive proproteins which are activated when cleaved by extracellular proteinases.

---

Note: This product is for in vitro research use only