

KDM6B Antibody

Catalog No: #43401

Orders: order@signalwayantibody.com

Support: tech@signalwayantibody.com

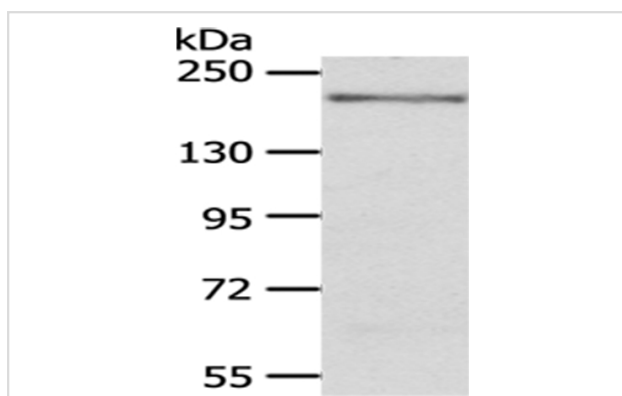
Description

Product Name	KDM6B Antibody
Host Species	Rabbit
Clonality	Polyclonal
Purification	Antigen affinity purification.
Applications	WB
Species Reactivity	Hu
Specificity	The antibody detects endogenous levels of total KDM6B protein.
Immunogen Type	peptide
Immunogen Description	Synthetic peptide of human KDM6B
Target Name	KDM6B
Other Names	JMJD3
Accession No.	Swiss-Prot#: O15054 Gene ID: 23135
Uniprot	O15054
GeneID	23135;
Calculated MW	177kd
Concentration	2.8mg/ml
Formulation	Rabbit IgG in pH7.4 PBS, 0.05% NaN ₃ , 40% Glycerol.
Storage	Store at -20°C

Application Details

Western blotting: 1:200-1:1000

Images



Gel: 6%SDS-PAGE
 Lysate: 40 µg
 Lane: A172 cells
 Primary antibody: 1/200 dilution
 Secondary antibody: Goat anti rabbit IgG at 1/8000 dilution
 Exposure time: 10 minutes

Background

KDM6B (Lysine demethylase 6B) is a 1,679 amino acid nuclear protein that contains one JmjC domain and belongs to the highly conserved JmjC domain-containing protein family. Functioning as a histone demethylase, JMJD3 uses iron and ascorbate as cofactors to demethylate dimethylated

and trimethylated Lys-27 residues of Histone H3, thereby playing an important role in the modification of the histone code.?

Note: This product is for in vitro research use only