

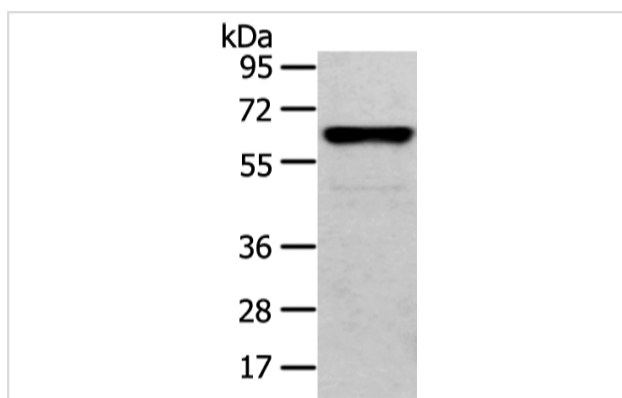
Description

| | |
|-----------------------|--|
| Product Name | CLK2 Antibody |
| Host Species | Rabbit |
| Clonality | Polyclonal |
| Purification | Antigen affinity purification. |
| Applications | WB |
| Species Reactivity | Hu |
| Specificity | The antibody detects endogenous levels of total CLK2 protein. |
| Immunogen Type | peptide |
| Immunogen Description | Synthetic peptide of human CLK2 |
| Target Name | CLK2 |
| Other Names | CDC-like kinase 2; CLK kinase; CLK2; Dual specificity protein kinase CLK2; hCLK2 |
| Accession No. | Swiss-Prot#: P49760 Gene ID: 1196 |
| Uniprot | P49760 |
| GeneID | 1196; |
| Calculated MW | 60kd |
| Concentration | 1.1mg/ml |
| Formulation | Rabbit IgG in pH7.4 PBS, 0.05% NaN ₃ , 40% Glycerol. |
| Storage | Store at -20°C |

Application Details

Western blotting: 1:500-1:2000

Images



Gel: 8%SDS-PAGE
Lysate: 40 µg
Lane: Jurkat cell
Primary antibody: 1/200 dilution
Secondary antibody: Goat anti rabbit IgG at 1/8000 dilution
Exposure time: 2 minutes

Background

This gene encodes a dual specificity protein kinase that phosphorylates serine/threonine and tyrosine-containing substrates. Activity of this protein regulates serine- and arginine-rich (SR) proteins of the spliceosomal complex, thereby influencing alternative transcript splicing. Chromosomal

translocations have been characterized between this locus and the PAFAH1B3 (platelet-activating factor acetylhydrolase 1b, catalytic subunit 3 (29kDa)) gene on chromosome 19, resulting in the production of a fusion protein.

Note: This product is for in vitro research use only