

EPHA3 Antibody

Catalog No: #43406

Orders: order@signalwayantibody.comSupport: tech@signalwayantibody.com

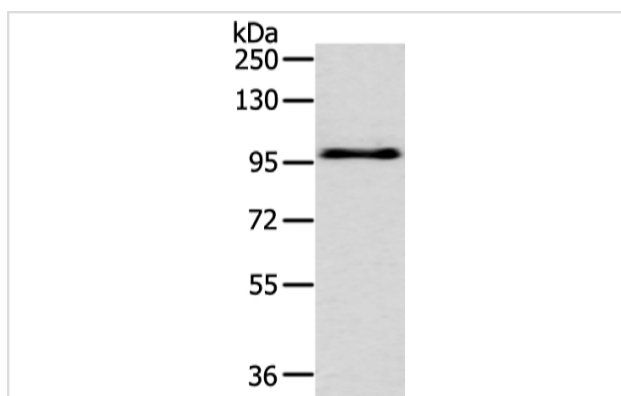
Description

Product Name	EPHA3 Antibody
Host Species	Rabbit
Clonality	Polyclonal
Purification	Antigen affinity purification.
Applications	WB
Species Reactivity	Hu
Specificity	The antibody detects endogenous levels of total EPHA3 protein.
Immunogen Type	peptide
Immunogen Description	Synthetic peptide of human EPHA3
Target Name	EPHA3
Other Names	EK4; ETK; HEK; ETK1; HEK4; TYRO4
Accession No.	Swiss-Prot#: P29320 Gene ID: 2042
Uniprot	P29320
GeneID	2042;
Calculated MW	110kd
Concentration	2.4mg/ml
Formulation	Rabbit IgG in pH7.4 PBS, 0.05% NaN ₃ , 40% Glycerol.
Storage	Store at -20°C

Application Details

Western blotting: 1:500-1:2000

Images



Gel: 6%SDS-PAGE
 Lysate: 40 µg
 Lane: HeLa cell
 Primary antibody: 1/400 dilution
 Secondary antibody: Goat anti rabbit IgG at 1/8000 dilution
 Exposure time: 30 seconds

Background

This gene belongs to the ephrin receptor subfamily of the protein-tyrosine kinase family. EPH and EPH-related receptors have been implicated in mediating developmental events, particularly in the nervous system. Receptors in the EPH subfamily typically have a single kinase domain and an

extracellular region containing a Cys-rich domain and 2 fibronectin type III repeats. The ephrin receptors are divided into 2 groups based on the similarity of their extracellular domain sequences and their affinities for binding ephrin-A and ephrin-B ligands.?

Note: This product is for in vitro research use only