

SCN1A Antibody

Catalog No: #43409

Orders: order@signalwayantibody.comSupport: tech@signalwayantibody.com

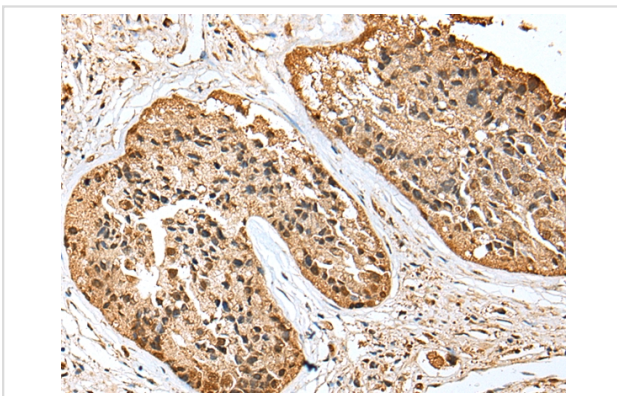
Description

Product Name	SCN1A Antibody
Host Species	Rabbit
Clonality	Polyclonal
Purification	Antigen affinity purification.
Applications	IHC
Species Reactivity	Hu Rt
Specificity	The antibody detects endogenous levels of total SCN1A protein.
Immunogen Description	Synthetic peptide of human SCN1A
Target Name	SCN1A
Other Names	FEB3; FHM3; NAC1; SCN1; SMEI; EIEE6; FEB3A; HBSCI; GEFSP2; Nav1.1
Accession No.	Swiss-Prot#: P35498 Gene ID: 6323
Uniprot	P35498
GeneID	6323;
Concentration	1.3mg/ml
Formulation	Rabbit IgG in pH7.4 PBS, 0.05% NaN ₃ , 40% Glycerol.
Storage	Store at -20°C

Application Details

Immunohistochemistry: 1:20-1:100

Images



Immunohistochemical analysis of paraffin-embedded Human prostate cancer tissue using #43409 at dilution 1/20,

Background

The vertebrate sodium channel is a voltage-gated ion channel essential for the generation and propagation of action potentials, mainly in nerve and muscle. Voltage-sensitive sodium channels are heteromeric complexes consisting of a large central pore-forming glycosylated alpha subunit, and two smaller auxiliary beta subunits. This gene encodes the large alpha subunit, and mutations in this gene have been associated with several epilepsy, convulsion and migraine disorders. Alternative splicing results in multiple transcript variants. The RefSeq Project has decided to create four representative RefSeq records. Three of the transcript variants are supported by experimental evidence and the fourth contains alternate 5'

untranslated exons, the exact combination of which have not been experimentally confirmed for the full-length transcript.

Note: This product is for in vitro research use only