

SLC24A4 Antibody

Catalog No: #43417

Orders: order@signalwayantibody.comSupport: tech@signalwayantibody.com

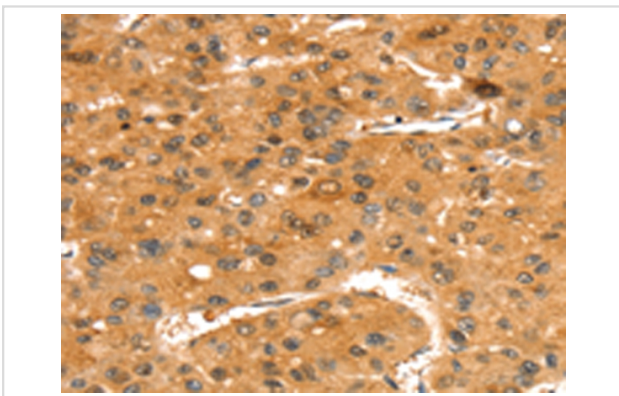
Description

| | |
|-----------------------|--|
| Product Name | SLC24A4 Antibody |
| Host Species | Rabbit |
| Clonality | Polyclonal |
| Purification | Antigen affinity purification. |
| Applications | IHC |
| Species Reactivity | Hu |
| Specificity | The antibody detects endogenous levels of total SLC24A4 protein. |
| Immunogen Description | Synthetic peptide of human SLC24A4 |
| Target Name | SLC24A4 |
| Other Names | AI2A5; NCKX4; SHEP6; SLC24A2 |
| Accession No. | Swiss-Prot#: Q8NFF2 Gene ID: 123041 |
| Uniprot | Q8NFF2 |
| GeneID | 123041; |
| Concentration | 2.1mg/ml |
| Formulation | Rabbit IgG in pH7.4 PBS, 0.05% NaN ₃ , 40% Glycerol. |
| Storage | Store at -20°C |

Application Details

Immunohistochemistry: 1:20-1:100

Images



Immunohistochemical analysis of paraffin-embedded Human liver cancer tissue using #43417 at dilution 1/35,

Background

This gene encodes a member of the potassium-dependent sodium/calcium exchanger protein family. Alternative splicing results in multiple transcript variants. Transports 1 Ca²⁺ and 1 K⁺ in exchange for 4 Na⁺. Controls the rapid response termination and proper regulation of adaptation in olfactory sensory neurons (OSNs) which subsequently influences how odor information is encoded and perceived.

Note: This product is for in vitro research use only