

SMYD5 Antibody

Catalog No: #43418

Orders: order@signalwayantibody.com

Support: tech@signalwayantibody.com

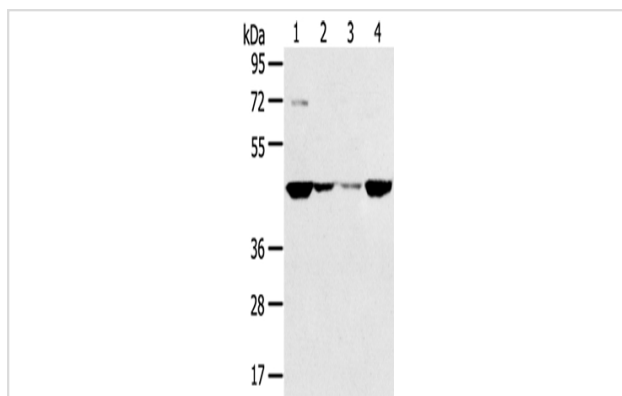
Description

Product Name	SMYD5 Antibody
Host Species	Rabbit
Clonality	Polyclonal
Purification	Antigen affinity purification.
Applications	WB
Species Reactivity	Hu
Specificity	The antibody detects endogenous levels of total SMYD5 protein.
Immunogen Type	peptide
Immunogen Description	Synthetic peptide of human SMYD5
Target Name	SMYD5
Other Names	RRG1; RAI15; NN8-4AG; ZMYND23
Accession No.	Swiss-Prot#: Q6GMV2?Gene ID: 10322
Uniprot	Q6GMV2
GeneID	10322;
Calculated MW	47kd
Concentration	0.9mg/ml
Formulation	Rabbit IgG in pH7.4 PBS, 0.05% NaN ₃ , 40% Glycerol.
Storage	Store at -20°C

Application Details

Western blotting: 1:500-1:2000

Images



Gel: 8%SDS-PAGE

Lysate: 40 µg

Lane 1-4: HT29 cells, 231 cells, hela cells, A549 cells

Primary antibody: 1/200 dilution

Secondary antibody: Goat anti rabbit IgG at 1/8000 dilution

Exposure time: 1 minute

Background

The SMYD (SET and MYND domain) family of lysine methyltransferases (KMTs) plays pivotal roles in various cellular processes, including gene expression regulation and DNA damage response. SMYD1, SMYD2, and SMYD3 share a high degree of sequence homology and, with the exception

of SMYD5, human SMYD proteins harbor at least one C-terminal tetratricopeptide repeat (TPR) domain. The SMYD proteins have been found to be linked to various cancers and biological processes.

Note: This product is for in vitro research use only