

GPR15 Antibody

Catalog No: #43419

Orders: order@signalwayantibody.comSupport: tech@signalwayantibody.com

Description

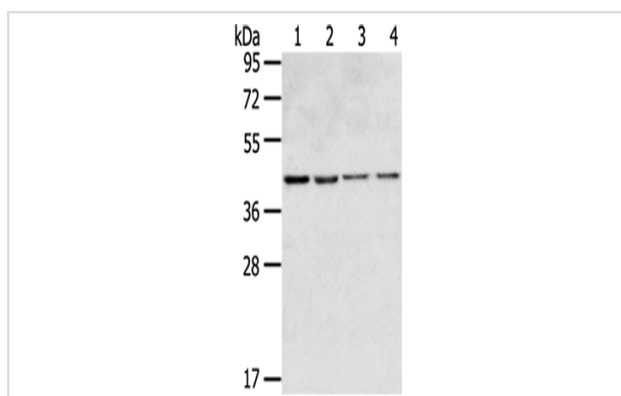
Product Name	GPR15 Antibody
Host Species	Rabbit
Clonality	Polyclonal
Purification	Antigen affinity purification.
Applications	WB IHC
Species Reactivity	Hu
Specificity	The antibody detects endogenous levels of total GPR15 protein.
Immunogen Description	Synthetic peptide of human GPR15
Target Name	GPR15
Other Names	BOB
Accession No.	Swiss-Prot#: P49685Gene ID: 2838
Uniprot	P49685
GeneID	2838;
Calculated MW	41kd
Concentration	2.1mg/ml
Formulation	Rabbit IgG in pH7.4 PBS, 0.05% NaN ₃ , 40% Glycerol.
Storage	Store at -20°C

Application Details

Western blotting: 1:500-1:2000

Immunohistochemistry: 1:20-1:100

Images



Gel: 8%SDS-PAGE

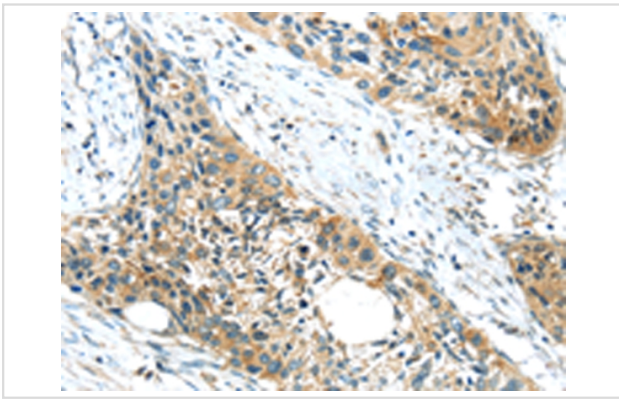
Lysate: 40 µg

Lane 1-4: HepG2 cells, 231 cells, HeLa cells, Lovo cells,

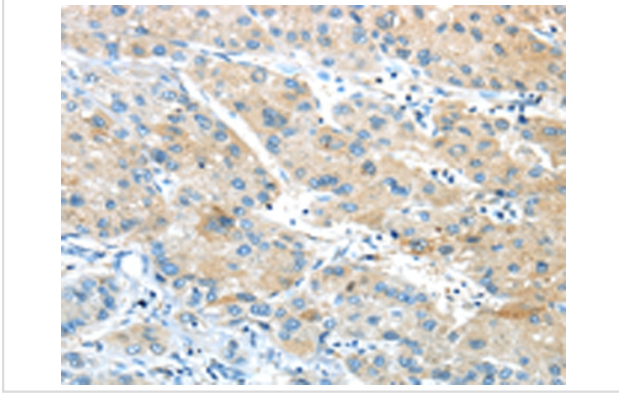
Primary antibody: 1/350 dilution

Secondary antibody: Goat anti rabbit IgG at 1/8000 dilution

Exposure time: 20 seconds



Immunohistochemical analysis of paraffin-embedded Human esophagus cancer tissue using #43419 at dilution 1/20.



Immunohistochemical analysis of paraffin-embedded Human liver cancer tissue using #43419 at dilution 1/20.

Background

This gene encodes a G protein-coupled receptor that acts as a chemokine receptor for human immunodeficiency virus type 1 and 2. The encoded protein localizes to the cell membrane.

Note: This product is for in vitro research use only