

TPH2 Antibody

Catalog No: #43424

Orders: order@signalwayantibody.comSupport: tech@signalwayantibody.com

Description

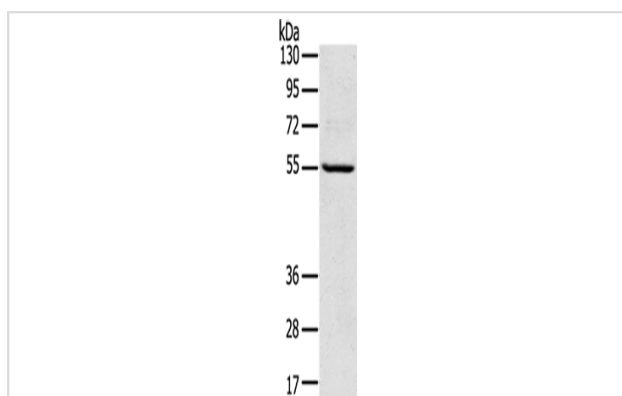
Product Name	TPH2 Antibody
Host Species	Rabbit
Clonality	Polyclonal
Purification	Antigen affinity purification.
Applications	WB IHC
Species Reactivity	Hu Ms Rt
Specificity	The antibody detects endogenous levels of total TPH2 protein.
Immunogen Description	Synthetic peptide of human TPH2
Target Name	TPH2
Other Names	NTPH; ADHD7
Accession No.	Swiss-Prot#: Q8IWU9Gene ID: 121278
Uniprot	Q8IWU9
GeneID	121278;
Calculated MW	56kd
Concentration	1.2mg/ml
Formulation	Rabbit IgG in pH7.4 PBS, 0.05% NaN ₃ , 40% Glycerol.
Storage	Store at -20°C

Application Details

Western blotting: 1:200-1:1000

Immunohistochemistry: 1:20-1:100

Images



Gel: 8%SDS-PAGE

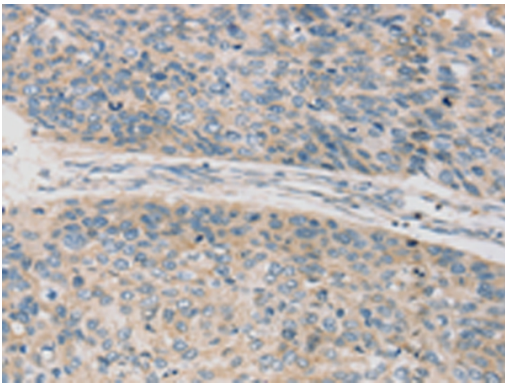
Lysate: 40 µg

Lane: Huvec cells

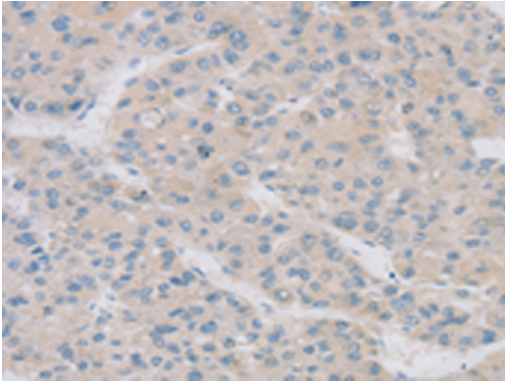
Primary antibody: 1/300 dilution

Secondary antibody: Goat anti rabbit IgG at 1/8000 dilution

Exposure time: 1 minute



Immunohistochemical analysis of paraffin-embedded Human esophagus cancer tissue using #43424 at dilution 1/20.



Immunohistochemical analysis of paraffin-embedded Human liver cancer tissue using #43424 at dilution 1/20.

Background

This gene encodes a member of the pterin-dependent aromatic acid hydroxylase family. The encoded protein catalyzes the first and rate limiting step in the biosynthesis of serotonin, an important hormone and neurotransmitter. The human genome contains two related tryptophan hydroxylases, one on chromosome 11p15-p14 and one on chromosome 12q21. This gene is expressed predominantly in the brain stem.

Note: This product is for in vitro research use only