

ENTPD1 Antibody

Catalog No: #43433

Orders: order@signalwayantibody.comSupport: tech@signalwayantibody.com

Description

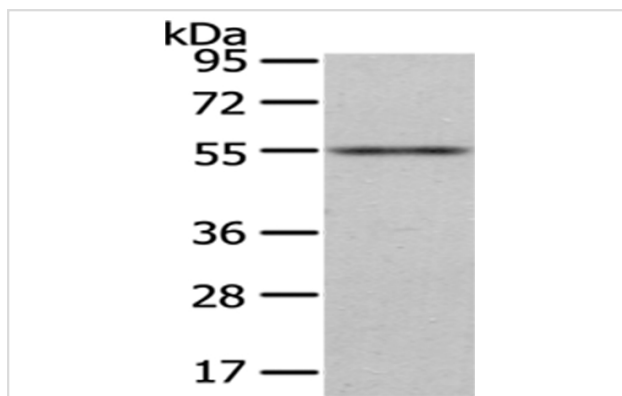
Product Name	ENTPD1 Antibody
Host Species	Rabbit
Clonality	Polyclonal
Purification	Antigen affinity purification.
Applications	WB IHC
Species Reactivity	Hu Ms Rt
Specificity	The antibody detects endogenous levels of total ENTPD1 protein.
Immunogen Description	Synthetic peptide of human ENTPD1
Target Name	ENTPD1
Other Names	CD39; SPG64; ATPDase; NTPDase-1
Accession No.	Swiss-Prot#: P49961 Gene ID: 953
Uniprot	P49961
GeneID	953;
Calculated MW	58kd
Concentration	1.6mg/ml
Formulation	Rabbit IgG in pH7.4 PBS, 0.05% NaN ₃ , 40% Glycerol.
Storage	Store at -20°C

Application Details

Western blotting: 1:200-1:1000

Immunohistochemistry: 1:20-1:100

Images



Gel: 8%SDS-PAGE

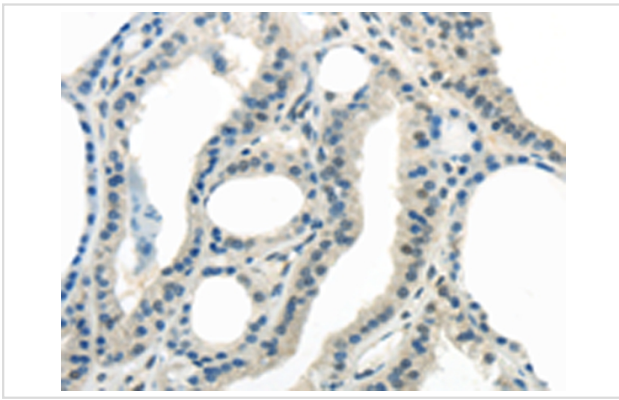
Lysate: 40 µg

Lane: Mouse heart tissue

Primary antibody: 1/200 dilution

Secondary antibody: Goat anti rabbit IgG at 1/8000 dilution

Exposure time: 1 minute



Immunohistochemical analysis of paraffin-embedded Human thyroid cancer tissue using #43433 at dilution 1/25,

Background

In the nervous system, could hydrolyze ATP and other nucleotides to regulate purinergic neurotransmission. Could also be implicated in the prevention of platelet aggregation by hydrolyzing platelet-activating ADP to AMP. Hydrolyzes ATP and ADP equally well.

Note: This product is for in vitro research use only