

SMYD2 Antibody

Catalog No: #43434

Orders: order@signalwayantibody.comSupport: tech@signalwayantibody.com

Description

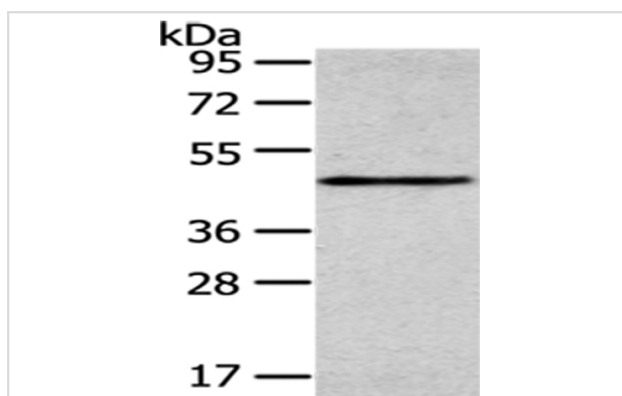
| | |
|-----------------------|---|
| Product Name | SMYD2 Antibody |
| Host Species | Rabbit |
| Clonality | Polyclonal |
| Purification | Antigen affinity purification. |
| Applications | WB IHC |
| Species Reactivity | Hu Ms Rt |
| Specificity | The antibody detects endogenous levels of total SMYD2 protein. |
| Immunogen Description | Synthetic peptide of human SMYD2 |
| Target Name | SMYD2 |
| Other Names | KMT3C; HSKM-B; ZMYND14 |
| Accession No. | Swiss-Prot#: Q9NRG4 Gene ID: 56950 |
| Uniprot | Q9NRG4 |
| GeneID | 56950; |
| Calculated MW | 50kd |
| Concentration | 2.2mg/ml |
| Formulation | Rabbit IgG in pH7.4 PBS, 0.05% NaN ₃ , 40% Glycerol. |
| Storage | Store at -20°C |

Application Details

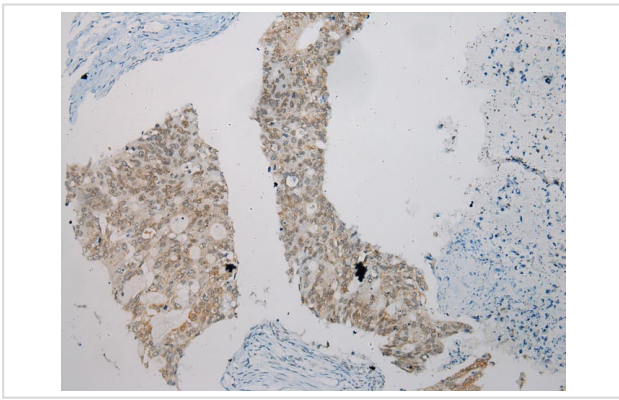
Western blotting: 1:200-1:1000

Immunohistochemistry: 1:100-1:200

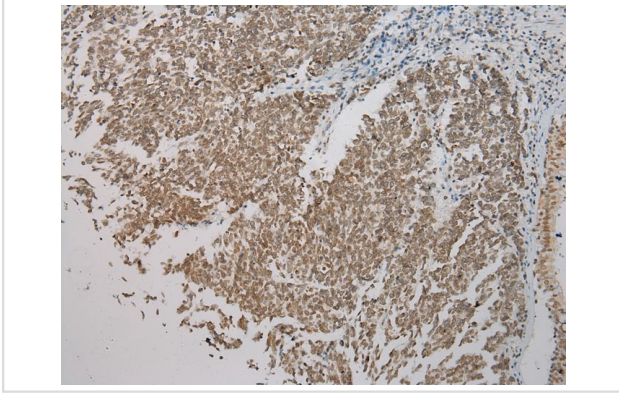
Images



Gel: 8%SDS-PAGE
Lysate: 40 µg
Lane: Mouse heart tissue
Primary antibody: 1/350 dilution
Secondary antibody: Goat anti rabbit IgG at 1/8000 dilution
Exposure time: 2 minutes



Immunohistochemical analysis of paraffin-embedded Human Colorectal cancer tissue using #43434 at dilution 1/200.



Immunohistochemical analysis of paraffin-embedded Human Lung cancer tissue using #43434 at dilution 1/200.

Background

SET domain-containing proteins, such as SMYD2, catalyze lysine methylation (Brown et al., 2006 [PubMed 16805913]).

Note: This product is for in vitro research use only