

WNT6 Antibody

Catalog No: #43435

Orders: order@signalwayantibody.comSupport: tech@signalwayantibody.com

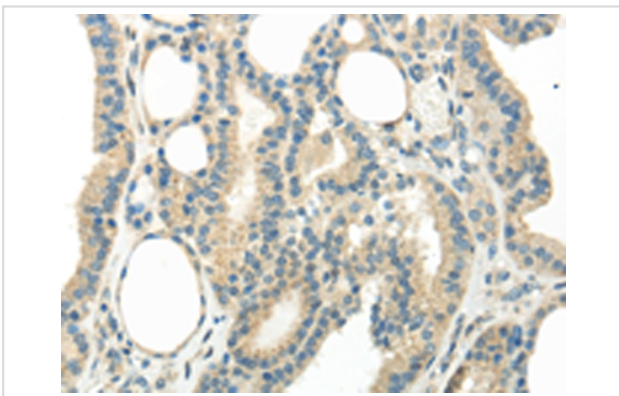
Description

Product Name	WNT6 Antibody
Host Species	Rabbit
Clonality	Polyclonal
Purification	Antigen affinity purification.
Applications	IHC
Species Reactivity	Hu Ms
Specificity	The antibody detects endogenous levels of total WNT6 protein.
Immunogen Description	Synthetic peptide of human WNT6
Target Name	WNT6
Other Names	Protein Wnt-6
Accession No.	Swiss-Prot#: Q9Y6F9 Gene ID: 7475
Uniprot	Q9Y6F9
GeneID	7475;
Concentration	2.4mg/ml
Formulation	Rabbit IgG in pH7.4 PBS, 0.05% NaN ₃ , 40% Glycerol.
Storage	Store at -20°C

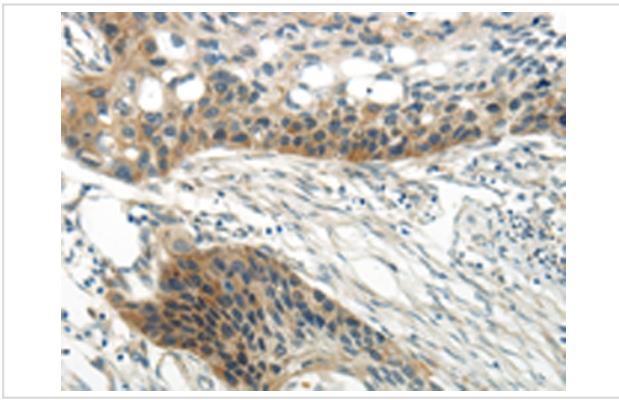
Application Details

Immunohistochemistry: 1:20-1:100

Images



Immunohistochemical analysis of paraffin-embedded Human thyroid cancer tissue using #43435 at dilution 1/35.



Immunohistochemical analysis of paraffin-embedded Human esophagus cancer tissue using #43435 at dilution 1/35.

Background

The WNT gene family consists of structurally related genes which encode secreted signaling proteins. These proteins have been implicated in oncogenesis and in several developmental processes, including regulation of cell fate and patterning during embryogenesis. This gene is a member of the WNT gene family. It is overexpressed in cervical cancer cell line and strongly coexpressed with another family member, WNT10A, in colorectal cancer cell line. The gene overexpression may play key roles in carcinogenesis. This gene and the WNT10A gene are clustered in the chromosome 2q35 region. The protein encoded by this gene is 97% identical to the mouse Wnt6 protein at the amino acid level.

Note: This product is for in vitro research use only