

ARFGAP2 Antibody

Catalog No: #43440

Orders: order@signalwayantibody.comSupport: tech@signalwayantibody.com

Description

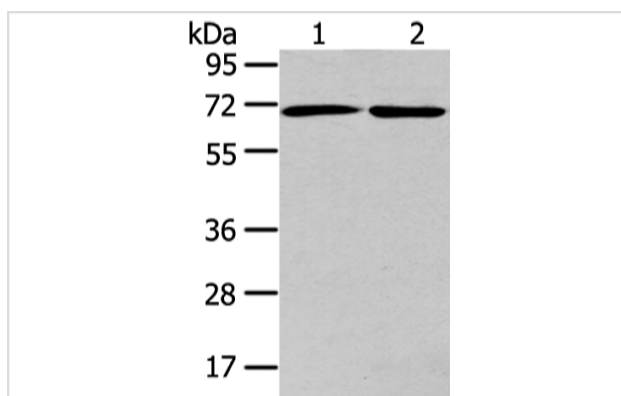
Product Name	ARFGAP2 Antibody
Host Species	Rabbit
Clonality	Polyclonal
Purification	Antigen affinity purification.
Applications	WB IHC
Species Reactivity	Hu Ms Rt
Specificity	The antibody detects endogenous levels of total ARFGAP2 protein.
Immunogen Description	Synthetic peptide of human ARFGAP2
Target Name	ARFGAP2
Other Names	IRZ; ZFP289; ZNF289; NBLA10535
Accession No.	Swiss-Prot#: Q8N6H7 Gene ID: 84364
Uniprot	Q8N6H7
GeneID	84364;
Calculated MW	57kd
Concentration	1.5mg/ml
Formulation	Rabbit IgG in pH7.4 PBS, 0.05% NaN ₃ , 40% Glycerol.
Storage	Store at -20°C

Application Details

Western blotting: 1:500-1:2000

Immunohistochemistry: 1:100-1:200

Images



Gel: 8%SDS-PAGE

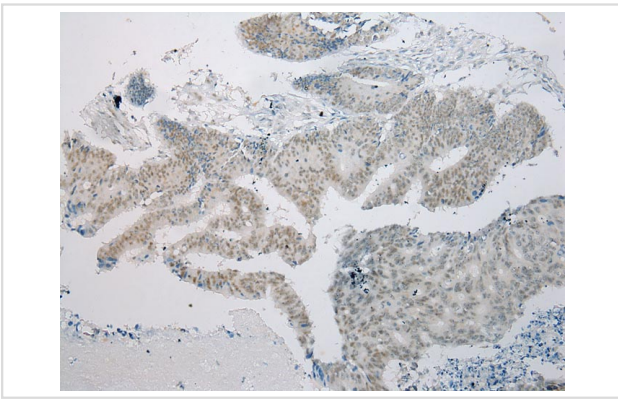
Lysate: 40 µg

Lane 1-2: A431 and hela cell

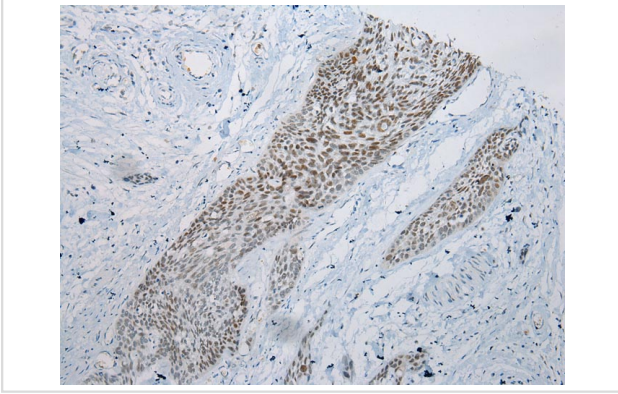
Primary antibody: 1/200 dilution

Secondary antibody: Goat anti rabbit IgG at 1/8000 dilution

Exposure time: 15 seconds



Immunohistochemical analysis of paraffin-embedded Human Colorectal cancer tissue using #43440 at dilution 1/100.



Immunohistochemical analysis of paraffin-embedded Human Esophagus cancer tissue using #43440 at dilution 1/200.

Background

ZNF289 (zinc finger protein 289), also known as ARFGAP2 (ADP-ribosylation factor GTPase activating protein 2), IRZ, Zfp289 or Nbla10535, functions as a GTPase-activating protein (GAP) for ARF family proteins. Localizing to the cytoplasmic side of the Golgi apparatus, ZNF289 contains one ARF-GAP domain and is found associated with COP-I-coated vesicles.

Note: This product is for in vitro research use only