

ZNF146 Antibody

Catalog No: #43442

Orders: order@signalwayantibody.com

Support: tech@signalwayantibody.com

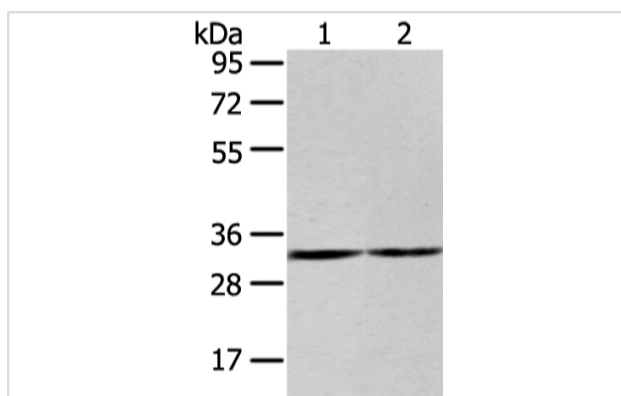
Description

Product Name	ZNF146 Antibody
Host Species	Rabbit
Clonality	Polyclonal
Purification	Antigen affinity purification.
Applications	WB
Species Reactivity	Hu
Specificity	The antibody detects endogenous levels of total ZNF146 protein.
Immunogen Type	peptide
Immunogen Description	Synthetic peptide of human ZNF146
Target Name	ZNF146
Other Names	OZF
Accession No.	Swiss-Prot#: Q15072 Gene ID: 7705
Uniprot	Q15072
GeneID	7705;
Calculated MW	33kd
Concentration	2.2mg/ml
Formulation	Rabbit IgG in pH7.4 PBS, 0.05% NaN ₃ , 40% Glycerol.
Storage	Store at -20°C

Application Details

Western blotting: 1:200-1:1000

Images



Gel: 8%SDS-PAGE
 Lysate: 40 µg
 Lane 1-2: 231 and K562 cell
 Primary antibody: 1/200 dilution
 Secondary antibody: Goat anti rabbit IgG at 1/8000 dilution
 Exposure time: 20 seconds

Background

ZNF146 (zinc finger protein 146), also known as OZF (only zinc finger protein), is a 292 amino acid nuclear protein that binds DNA and belongs to the KrB⁺B⁺Hppel C2H2-type zinc-finger protein family. ZNF146 interacts with UBC9 (ubiquitin carrier protein 9) and RAP1 (repressor/activator protein 1

homolog), and is highly expressed in multiple pancreatic and colorectal cancers. Lower levels of expression have been observed in kidney, lung, placenta and brain.?

Note: This product is for in vitro research use only