

## CBX4 Antibody

Catalog No: #43446

Orders: [order@signalwayantibody.com](mailto:order@signalwayantibody.com)Support: [tech@signalwayantibody.com](mailto:tech@signalwayantibody.com)

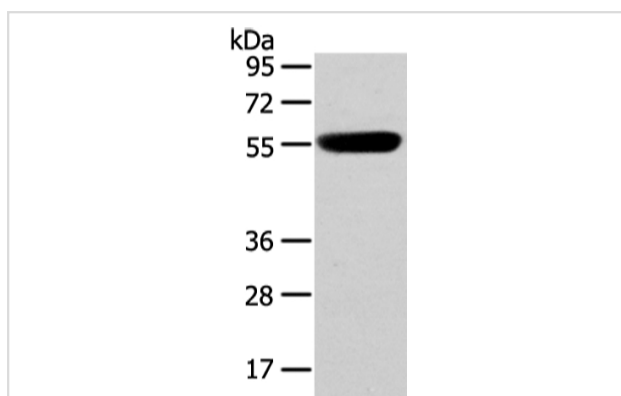
## Description

Product Name	CBX4 Antibody
Host Species	Rabbit
Clonality	Polyclonal
Purification	Antigen affinity purification.
Applications	WB
Species Reactivity	Hu
Specificity	The antibody detects endogenous levels of total CBX4 protein.
Immunogen Type	peptide
Immunogen Description	Synthetic peptide of human CBX4
Target Name	CBX4
Other Names	PC2; NBP16
Accession No.	Swiss-Prot#: O00257Gene ID: 8535
Uniprot	O00257
GeneID	8535;
Calculated MW	61kd
Concentration	1.5mg/ml
Formulation	Rabbit IgG in pH7.4 PBS, 0.05% NaN <sub>3</sub> , 40% Glycerol.
Storage	Store at -20°C

## Application Details

Western blotting: 1:500-1:2000

## Images



Gel: 8%SDS-PAGE  
Lysate: 40 µg  
Lane: Human fetal brain tissue  
Primary antibody: 1/250 dilution  
Secondary antibody: Goat anti rabbit IgG at 1/8000 dilution  
Exposure time: 1 minute

## Background

E3 SUMO-protein ligase which facilitates SUMO1 conjugation by UBE2I. Involved in the sumoylation of HNRNPK, a p53/TP53 transcriptional coactivator, hence indirectly regulates p53/TP53 transcriptional activation resulting in p21/CDKN1A expression. Monosumoylates ZNF131.

---

Note: This product is for in vitro research use only