

CBX7 Antibody

Catalog No: #43447

Orders: order@signalwayantibody.comSupport: tech@signalwayantibody.com

Description

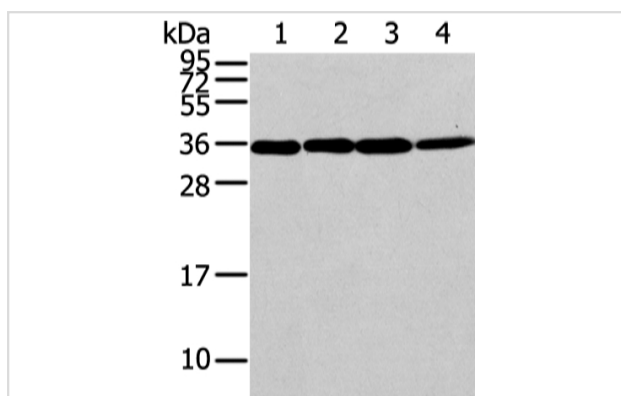
Product Name	CBX7 Antibody
Host Species	Rabbit
Clonality	Polyclonal
Purification	Antigen affinity purification.
Applications	WB IHC
Species Reactivity	Hu
Specificity	The antibody detects endogenous levels of total CBX7 protein.
Immunogen Description	Synthetic peptide of human CBX7
Target Name	CBX7
Other Names	chromobox homolog 7; Chromobox protein homolog 7
Accession No.	Swiss-Prot#: O95931 Gene ID: 23492
Uniprot	O95931
GeneID	23492;
Calculated MW	28kd
Concentration	0.9mg/ml
Formulation	Rabbit IgG in pH7.4 PBS, 0.05% NaN ₃ , 40% Glycerol.
Storage	Store at -20°C

Application Details

Western blotting: 1:500-1:2000

Immunohistochemistry: 1:20-1:100

Images



Gel: 12%SDS-PAGE

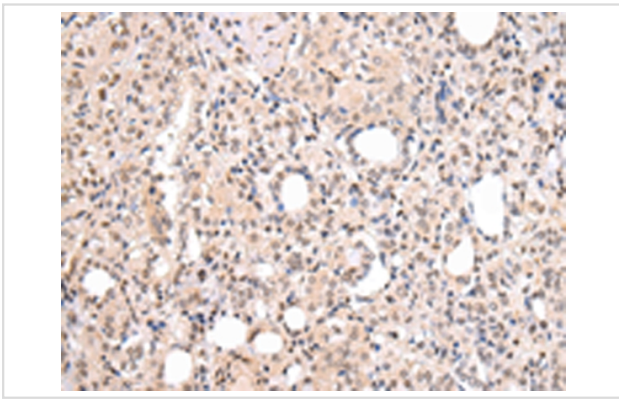
Lysate: 40 µg

Lane 1-4: Lovo, 293T, Jurkat and HeLa cell

Primary antibody: 1/200 dilution

Secondary antibody: Goat anti rabbit IgG at 1/8000 dilution

Exposure time: 30 seconds



Immunohistochemical analysis of paraffin-embedded Human thyroid cancer tissue using #43447 at dilution 1/20,

Background

CBX7 (Chromobox protein homolog 7) is a 251 amino acid nuclear protein that contains one N-terminal chromo domain and one C-terminal Pc box. Highly expressed in kidney, brain, heart and skeletal muscle, with weaker expression in peripheral blood leukocytes, CBX7 functions as a component of the chromatin-associated polycomb complex (PcG) and is involved in maintaining the transcriptionally repressed state of target genes.

Note: This product is for in vitro research use only