

## CLDND2 Antibody

Catalog No: #43448

Orders: order@signalwayantibody.com

Support: tech@signalwayantibody.com

## Description

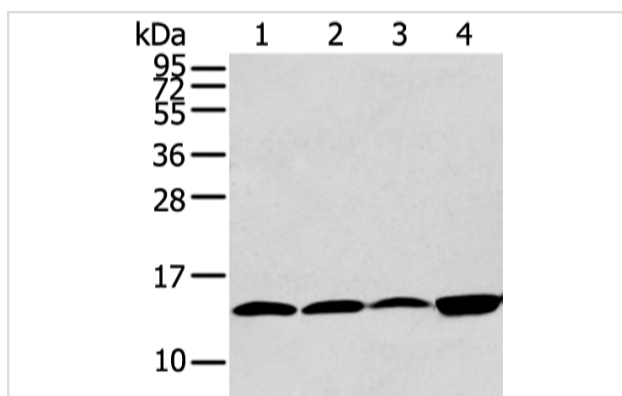
Product Name	CLDND2 Antibody
Host Species	Rabbit
Clonality	Polyclonal
Purification	Antigen affinity purification.
Applications	WB IHC
Species Reactivity	Hu Ms
Specificity	The antibody detects endogenous levels of total CLDND2 protein.
Immunogen Description	Synthetic peptide of human CLDND2
Target Name	CLDND2
Other Names	claudin domain containing 2; Claudin domain-containing protein 2; CLDN2; CLDND2; MGC33839
Accession No.	Swiss-Prot#: Q8NHS1 Gene ID: 125875
Uniprot	Q8NHS1
GeneID	125875;
Calculated MW	18kd
Concentration	3mg/ml
Formulation	Rabbit IgG in pH7.4 PBS, 0.05% NaN <sub>3</sub> , 40% Glycerol.
Storage	Store at -20°C

## Application Details

Western blotting: 1:500-1:2000

Immunohistochemistry: 1:20-1:100

## Images



Gel: 12%SDS-PAGE

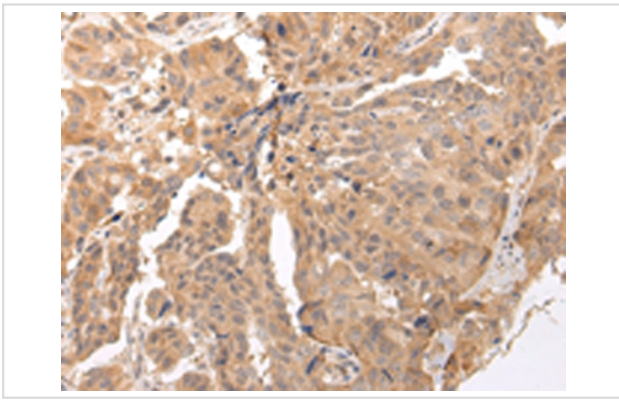
Lysate: 40 µg

Lane 1-4: HeLa, 293T, PC3 and TM4 cell

Primary antibody: 1/400 dilution

Secondary antibody: Goat anti rabbit IgG at 1/8000 dilution

Exposure time: 30 seconds



Immunohistochemical analysis of paraffin-embedded Human breast cancer tissue using #43448 at dilution 1/45,

## Background

CLDND2 (claudin domain containing 2) is a 167 amino acid multi-pass membrane protein that belongs to the PMP-22/EMP/MP20 family and is encoded by a gene that maps to human chromosome 19q13.33. Consisting of around 63 million bases with over 1,400 genes, chromosome 19 makes up over 2% of human genomic DNA. Chromosome 19 includes a diversity of interesting genes and is recognized for having the greatest gene density of the human chromosomes.

Note: This product is for in vitro research use only