

CDX2 Antibody

Catalog No: #43449

Orders: order@signalwayantibody.comSupport: tech@signalwayantibody.com

Description

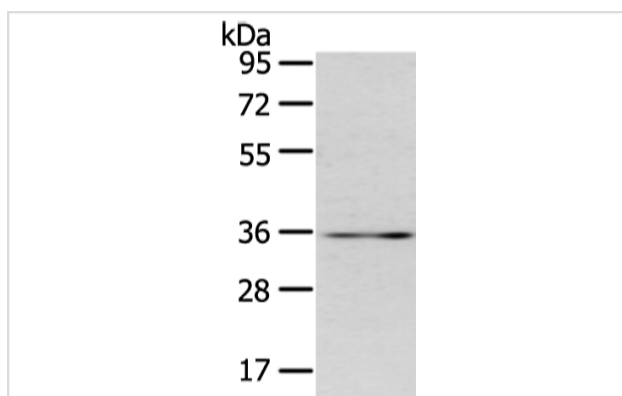
Product Name	CDX2 Antibody
Host Species	Rabbit
Clonality	Polyclonal
Purification	Antigen affinity purification.
Applications	WB IHC
Species Reactivity	Hu
Specificity	The antibody detects endogenous levels of total CDX2 protein.
Immunogen Description	Synthetic peptide of human CDX2
Target Name	CDX2
Other Names	CDX3; CDX-3; CDX2/AS
Accession No.	Swiss-Prot#: Q99626 Gene ID: 1045
Uniprot	Q99626
GeneID	1045;
Calculated MW	34kd
Concentration	2.3mg/ml
Formulation	Rabbit IgG in pH7.4 PBS, 0.05% NaN ₃ , 40% Glycerol.
Storage	Store at -20°C

Application Details

Western blotting: 1:200-1:1000

Immunohistochemistry: 1:20-1:100

Images



Gel: 10%SDS-PAGE

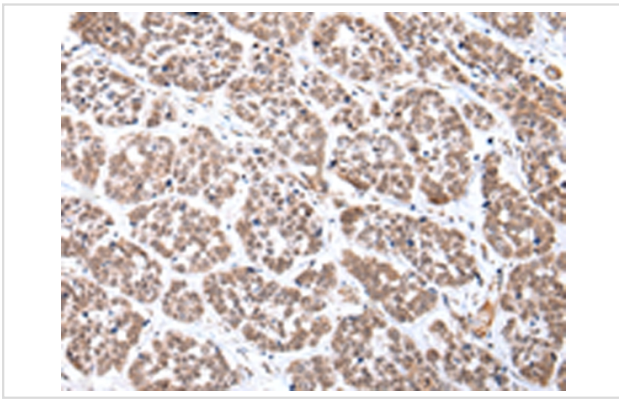
Lysate: 40 µg

Lane: PC3 cell

Primary antibody: 1/400 dilution

Secondary antibody: Goat anti rabbit IgG at 1/8000 dilution

Exposure time: 10 minutes



Immunohistochemical analysis of paraffin-embedded Human esophagus cancer tissue using #43449 at dilution 1/35,

Background

This gene is a member of the caudal-related homeobox transcription factor gene family. The encoded protein is a major regulator of intestine-specific genes involved in cell growth and differentiation. This protein also plays a role in early embryonic development of the intestinal tract. Aberrant expression of this gene is associated with intestinal inflammation and tumorigenesis.?

Note: This product is for in vitro research use only