

## COLEC12 Antibody

Catalog No: #43450

Orders: [order@signalwayantibody.com](mailto:order@signalwayantibody.com)Support: [tech@signalwayantibody.com](mailto:tech@signalwayantibody.com)

## Description

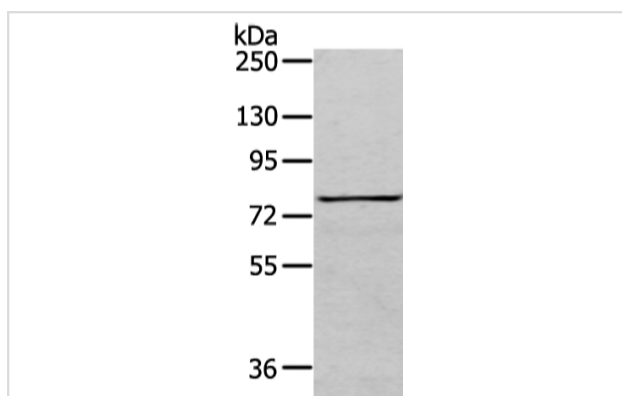
Product Name	COLEC12 Antibody
Host Species	Rabbit
Clonality	Polyclonal
Purification	Antigen affinity purification.
Applications	WB IHC
Species Reactivity	Hu
Specificity	The antibody detects endogenous levels of total COLEC12 protein.
Immunogen Description	Synthetic peptide of human COLEC12
Target Name	COLEC12
Other Names	CLP1; NSR2; SRCL; SCARA4
Accession No.	Swiss-Prot#: Q5KU26Gene ID: 81035
Uniprot	Q5KU26
GeneID	81035;
Calculated MW	82kd
Concentration	1mg/ml
Formulation	Rabbit IgG in pH7.4 PBS, 0.05% NaN <sub>3</sub> , 40% Glycerol.
Storage	Store at -20°C

## Application Details

Western blotting: 1:200-1:1000

Immunohistochemistry: 1:20-1:100

## Images



Gel: 6%SDS-PAGE

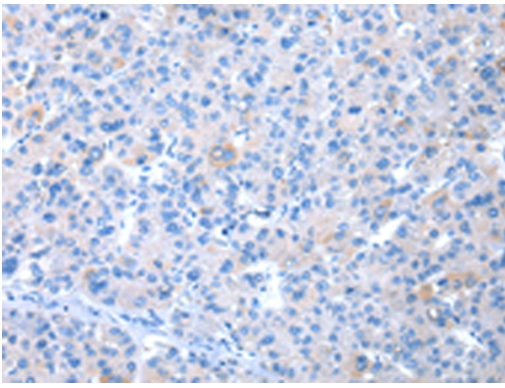
Lysate: 40 µg

Lane: K562 cell

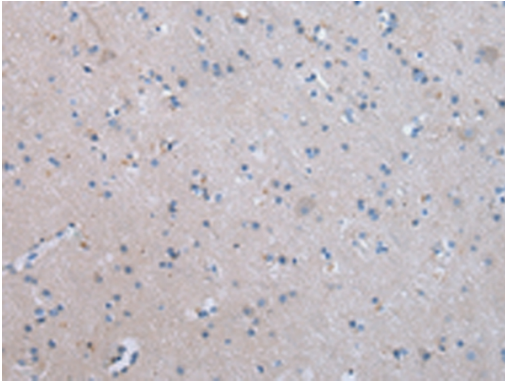
Primary antibody: 1/200 dilution

Secondary antibody: Goat anti rabbit IgG at 1/8000 dilution

Exposure time: 3 minutes



Immunohistochemical analysis of paraffin-embedded Human liver cancer tissue using #43450 at dilution 1/20.



Immunohistochemical analysis of paraffin-embedded Human brain tissue using #43450 at dilution 1/20.

## Background

This gene encodes a member of the C-lectin family, proteins that possess collagen-like sequences and carbohydrate recognition domains. This protein is a scavenger receptor, a cell surface glycoprotein that displays several functions associated with host defense. It can bind to carbohydrate antigens on microorganisms, facilitating their recognition and removal. It also mediates the recognition, internalization, and degradation of oxidatively modified low density lipoprotein by vascular endothelial cells.?

Note: This product is for in vitro research use only