

ADRB2 Antibody

Catalog No: #43453

Orders: order@signalwayantibody.comSupport: tech@signalwayantibody.com

Description

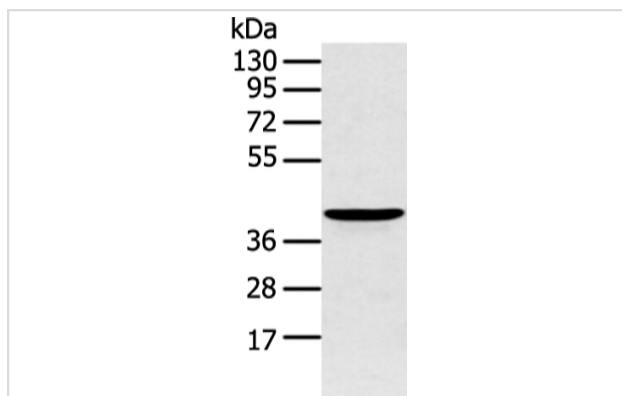
Product Name	ADRB2 Antibody
Host Species	Rabbit
Clonality	Polyclonal
Purification	Antigen affinity purification.
Applications	WB IHC
Species Reactivity	Hu Ms
Specificity	The antibody detects endogenous levels of total ADRB2 protein.
Immunogen Description	Synthetic peptide of human ADRB2
Target Name	ADRB2
Other Names	BAR; B2AR; ADRBR; ADRB2R; BETA2AR
Accession No.	Swiss-Prot#: P07550?Gene ID: 154
Uniprot	P07550
GeneID	154;
Calculated MW	46kd
Concentration	1.6mg/ml
Formulation	Rabbit IgG in pH7.4 PBS, 0.05% NaN ₃ , 40% Glycerol.
Storage	Store at -20°C

Application Details

Western blotting: 1:500-1:2000

Immunohistochemistry: 1:20-1:100

Images



Gel: 8%SDS-PAGE

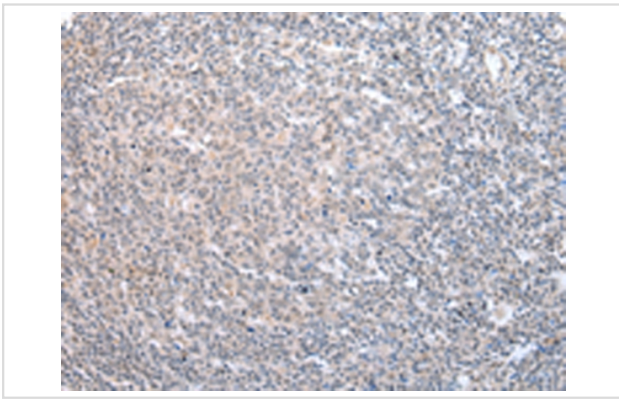
Lysate: 40 µg

Lane: Mouse kidney tissue

Primary antibody: 1/400 dilution

Secondary antibody: Goat anti rabbit IgG at 1/8000 dilution

Exposure time: 15 seconds



Immunohistochemical analysis of paraffin-embedded Human tonsil tissue using #43453 at dilution 1/25,

Background

This gene encodes beta-2-adrenergic receptor which is a member of the G protein-coupled receptor superfamily. This receptor is directly associated with one of its ultimate effectors, the class C L-type calcium channel Ca(V)1.2. This receptor-channel complex also contains a G protein, an adenylyl cyclase, cAMP-dependent kinase, and the counterbalancing phosphatase, PP2A. The assembly of the signaling complex provides a mechanism that ensures specific and rapid signaling by this G protein-coupled receptor.

Note: This product is for in vitro research use only