

DVL3 Antibody

Catalog No: #43454

Orders: order@signalwayantibody.comSupport: tech@signalwayantibody.com

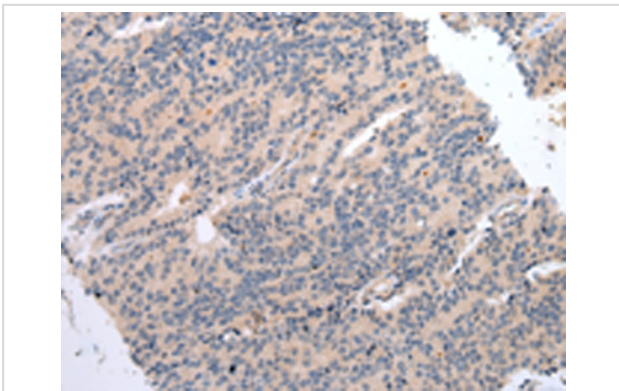
Description

Product Name	DVL3 Antibody
Host Species	Rabbit
Clonality	Polyclonal
Purification	Antigen affinity purification.
Applications	IHC
Species Reactivity	Hu Ms
Specificity	The antibody detects endogenous levels of total DVL3 protein.
Immunogen Description	Synthetic peptide of human DVL3
Target Name	DVL3
Other Names	dishevelled 3 (homologous to Drosophila dsh); dishevelled, dsh homolog 3 (Drosophila); Dishevelled-3; DSH homolog 3; DVL3; KIAA0208
Accession No.	Swiss-Prot#: Q92997 Gene ID: 1857
Uniprot	Q92997
GeneID	1857;
Concentration	0.5mg/ml
Formulation	Rabbit IgG in pH7.4 PBS, 0.05% NaN ₃ , 40% Glycerol.
Storage	Store at -20°C

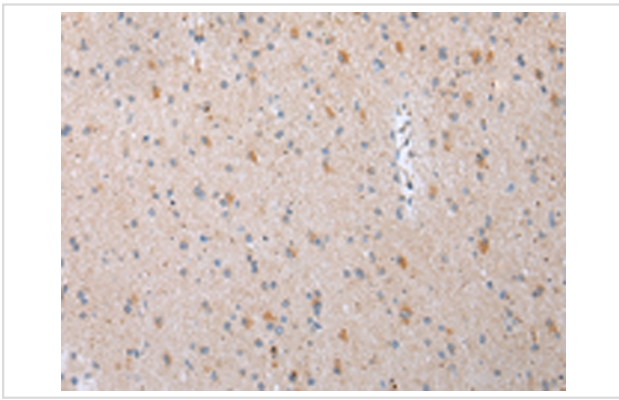
Application Details

Immunohistochemistry: 1:20-1:100

Images



Immunohistochemical analysis of paraffin-embedded Human prostate cancer tissue using #43454 at dilution 1/20.



Immunohistochemical analysis of paraffin-embedded Human brain tissue using #43454 at dilution 1/20.

Background

This gene is a member of a multi-gene family which shares strong similarity with the *Drosophila* dishevelled gene, *dsh*. The *Drosophila* dishevelled gene encodes a cytoplasmic phosphoprotein that regulates cell proliferation.

Note: This product is for in vitro research use only