

DYSF Antibody

Catalog No: #43455

Orders: order@signalwayantibody.comSupport: tech@signalwayantibody.com

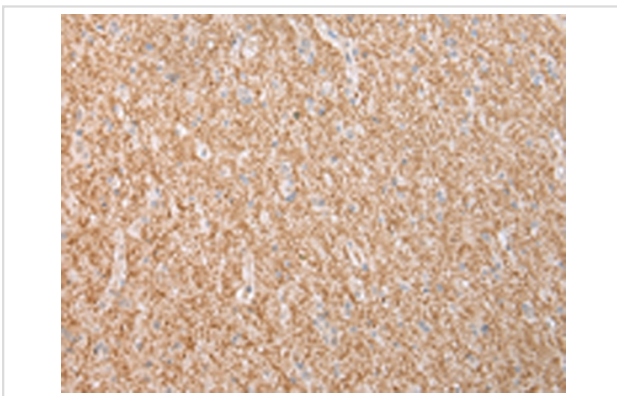
Description

Product Name	DYSF Antibody
Host Species	Rabbit
Clonality	Polyclonal
Purification	Antigen affinity purification.
Applications	IHC
Species Reactivity	Hu Ms
Specificity	The antibody detects endogenous levels of total DYSF protein.
Immunogen Description	Synthetic peptide of human DYSF
Target Name	DYSF
Other Names	MMD1; FER1L1; LGMD2B
Accession No.	Swiss-Prot#: O75923Gene ID: 8291
Uniprot	O75923
GeneID	8291;
Concentration	1.8mg/ml
Formulation	Rabbit IgG in pH7.4 PBS, 0.05% NaN ₃ , 40% Glycerol.
Storage	Store at -20°C

Application Details

Immunohistochemistry: 1:20-1:100

Images



Immunohistochemical analysis of paraffin-embedded Human brain tissue using #43455 at dilution 1/25,

Background

The protein encoded by this gene belongs to the ferlin family and is a skeletal muscle protein found associated with the sarcolemma. It is involved in muscle contraction and contains C2 domains that play a role in calcium-mediated membrane fusion events, suggesting that it may be involved in membrane regeneration and repair. In addition, the protein encoded by this gene binds caveolin-3, a skeletal muscle membrane protein which is important in the formation of caveolae. Specific mutations in this gene have been shown to cause autosomal recessive limb girdle muscular dystrophy type 2B (LGMD2B) as well as Miyoshi myopathy. Alternative splicing results in multiple transcript variants.

Note: This product is for in vitro research use only