

## SLC1A3 Antibody

Catalog No: #43457

Orders: order@signalwayantibody.com

Support: tech@signalwayantibody.com

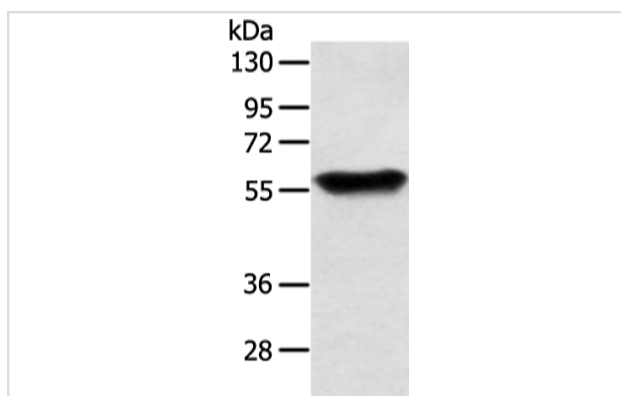
## Description

Product Name	SLC1A3 Antibody
Host Species	Rabbit
Clonality	Polyclonal
Purification	Antigen affinity purification.
Applications	WB
Species Reactivity	Hu
Specificity	The antibody detects endogenous levels of total SLC1A3 protein.
Immunogen Type	peptide
Immunogen Description	Synthetic peptide of human SLC1A3
Target Name	SLC1A3
Other Names	EA6; EAAT1; GLAST; GLAST1
Accession No.	Swiss-Prot#: P43003Gene ID: 6507
Uniprot	P43003
GeneID	6507;
Calculated MW	60kd
Concentration	1.4mg/ml
Formulation	Rabbit IgG in pH7.4 PBS, 0.05% NaN <sub>3</sub> , 40% Glycerol.
Storage	Store at -20°C

## Application Details

Western blotting: 1:500-1:2000

## Images



Gel: 6%SDS-PAGE  
Lysate: 40 µg  
Lane: Human fetal brain tissue  
Primary antibody: 1/350 dilution  
Secondary antibody: Goat anti rabbit IgG at 1/8000 dilution  
Exposure time: 20 seconds

## Background

This gene encodes a member of a member of a high affinity glutamate transporter family. This gene functions in the termination of excitatory neurotransmission in central nervous system. Mutations are associated with episodic ataxia, Type 6. Alternative splicing results in multiple transcript

variants.

---

Note: This product is for in vitro research use only