

## EPHB1 Antibody

Catalog No: #43459

Orders: [order@signalwayantibody.com](mailto:order@signalwayantibody.com)Support: [tech@signalwayantibody.com](mailto:tech@signalwayantibody.com)

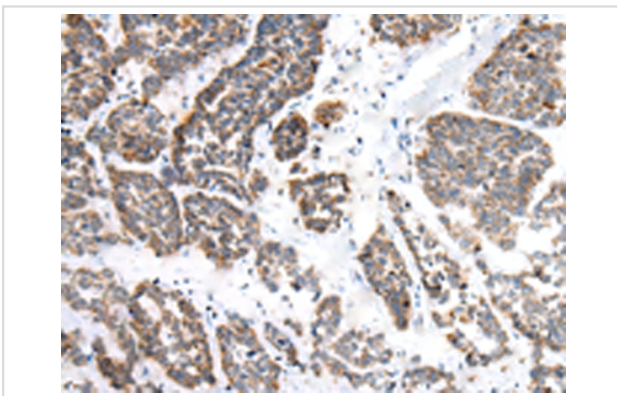
## Description

|                       |   |
|-----------------------|---|
| Product Name          | EPHB1 Antibody  |
| Host Species          | Rabbit  |
| Clonality             | Polyclonal  |
| Purification          | Antigen affinity purification.                                  |
| Applications          | IHC   |
| Species Reactivity    | Hu Rt   |
| Specificity           | The antibody detects endogenous levels of total EPHB1 protein.  |
| Immunogen Description | Synthetic peptide of human EPHB1                                |
| Target Name           | EPHB1   |
| Other Names           | ELK; NET; Hek6; EPHT2   |
| Accession No.         | Swiss-Prot#: P54762 Gene ID: 2047                               |
| Uniprot               | P54762  |
| GeneID                | 2047;   |
| Concentration         | 1.1mg/ml  |
| Formulation           | Rabbit IgG in pH7.4 PBS, 0.05% NaN <sub>3</sub> , 40% Glycerol. |
| Storage               | Store at -20°C  |

## Application Details

Immunohistochemistry: 1:20-1:100

## Images



Immunohistochemical analysis of paraffin-embedded Human esophagus cancer tissue using #43459 at dilution 1/20,

## Background

Ephrin receptors and their ligands, the ephrins, mediate numerous developmental processes, particularly in the nervous system. Based on their structures and sequence relationships, ephrins are divided into the ephrin-A (EFNA) class, which are anchored to the membrane by a glycosylphosphatidylinositol linkage, and the ephrin-B (EFNB) class, which are transmembrane proteins. The Eph family of receptors are divided into 2 groups based on the similarity of their extracellular domain sequences and their affinities for binding ephrin-A and ephrin-B ligands. Ephrin receptors make up the largest subgroup of the receptor tyrosine kinase (RTK) family. The protein encoded by this gene is a receptor for ephrin-B family

members.

---

Note: This product is for in vitro research use only