

## GDF10 Antibody

Catalog No: #43460

Orders: [order@signalwayantibody.com](mailto:order@signalwayantibody.com)Support: [tech@signalwayantibody.com](mailto:tech@signalwayantibody.com)

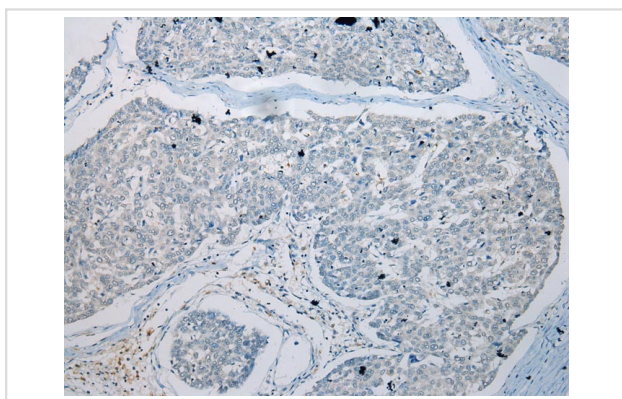
## Description

Product Name	GDF10 Antibody
Host Species	Rabbit
Clonality	Polyclonal
Purification	Antigen affinity purification.
Applications	IHC
Species Reactivity	Hu Ms Rt
Specificity	The antibody detects endogenous levels of total GDF10 protein.
Immunogen Description	Synthetic peptide of human GDF10
Target Name	GDF10
Other Names	BMP3B; BMP-3b
Accession No.	Swiss-Prot#: P55107Gene ID: 2662
Uniprot	P55107
GeneID	2662;
Concentration	0.8mg/ml
Formulation	Rabbit IgG in pH7.4 PBS, 0.05% NaN <sub>3</sub> , 40% Glycerol.
Storage	Store at -20°C

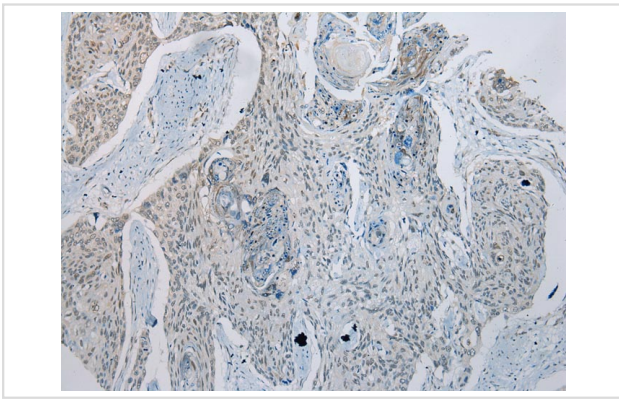
## Application Details

Immunohistochemistry: 1:100-1:200

## Images



Immunohistochemical analysis of paraffin-embedded Human Liver cancer tissue using #43460 at dilution 1/100,



Immunohistochemical analysis of paraffin-embedded Human Esophagus cancer tissue using #43460 at dilution 1/100,

## Background

The protein encoded by this gene is a member of the bone morphogenetic protein (BMP) family and the TGF-beta superfamily. This group of proteins is characterized by a polybasic proteolytic processing site which is cleaved to produce a mature protein containing seven conserved cysteine residues. The members of this family are regulators of cell growth and differentiation in both embryonic and adult tissues. Studies in mice suggest that the protein encoded by this gene plays a role in skeletal morphogenesis.?

Note: This product is for in vitro research use only