

HTR2A Antibody

Catalog No: #43462

Orders: order@signalwayantibody.comSupport: tech@signalwayantibody.com

Description

Product Name	HTR2A Antibody
Host Species	Rabbit
Clonality	Polyclonal
Purification	Antigen affinity purification.
Applications	WB IHC Elisa
Species Reactivity	Hu
Specificity	The antibody detects endogenous levels of total HTR2A protein.
Immunogen Description	Synthetic peptide of human HTR2A
Target Name	HTR2A
Other Names	HTR2; 5-HT2A
Accession No.	Swiss-Prot#: P28223Gene ID: 3356
Uniprot	P28223
GeneID	3356;
Calculated MW	53kd
Concentration	0.9mg/ml
Formulation	Rabbit IgG in pH7.4 PBS, 0.05% NaN ₃ , 40% Glycerol.
Storage	Store at -20°C

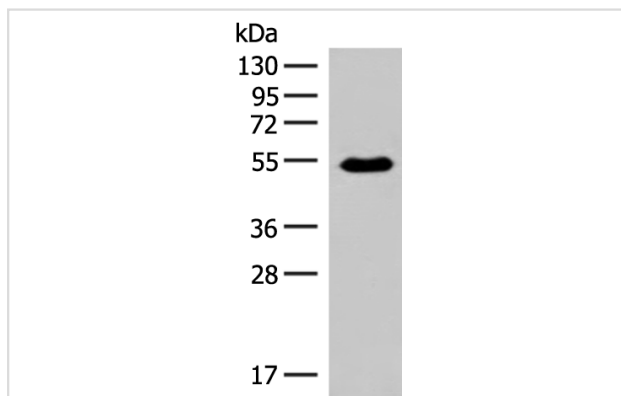
Application Details

Western blotting: 1:500-1:2000

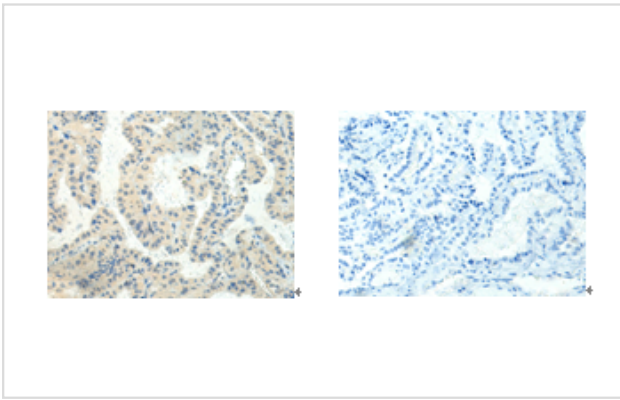
Immunohistochemistry:1:25-1:100

ELISA dilution 5000-10000

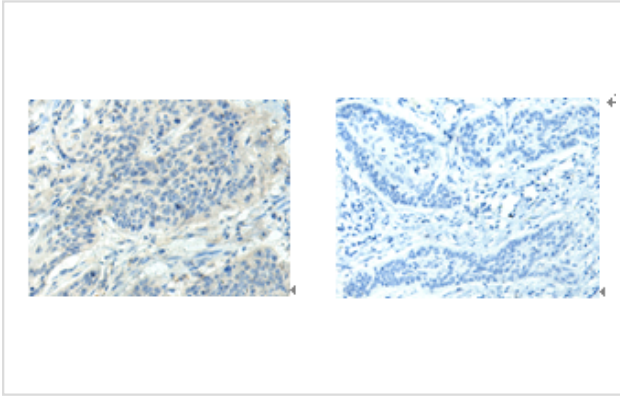
Images



Gel: 8%SDS-PAGE Lysate: 40 μ g Lane: Human fetal brain tissue lysate Primary antibody: 43462(HTR2A Antibody) at dilution 1/200 Secondary antibody: Goat anti rabbit IgG at 1/8000 dilution Exposure time: 30 seconds Gel: 8%SDS-PAGE



The image on the left is immunohistochemistry of paraffin-embedded Human thyroid cancer tissue using 43462(HTR2A Antibody) at dilution 1/20, on the right is treated with synthetic peptide.



The image on the left is immunohistochemistry of paraffin-embedded Human esophagus cancer tissue using 43462(HTR2A Antibody) at dilution 1/20, on the right is treated with synthetic peptide.

Background

This gene encodes one of the receptors for serotonin, a neurotransmitter with many roles. Mutations in this gene are associated with susceptibility to schizophrenia and obsessive-compulsive disorder, and are also associated with response to the antidepressant citalopram in patients with major depressive disorder (MDD). MDD patients who also have a mutation in intron 2 of this gene show a significantly reduced response to citalopram as this antidepressant downregulates expression of this gene.

Note: This product is for in vitro research use only