

## ABCA1 Antibody

Catalog No: #43463

Orders: [order@signalwayantibody.com](mailto:order@signalwayantibody.com)Support: [tech@signalwayantibody.com](mailto:tech@signalwayantibody.com)

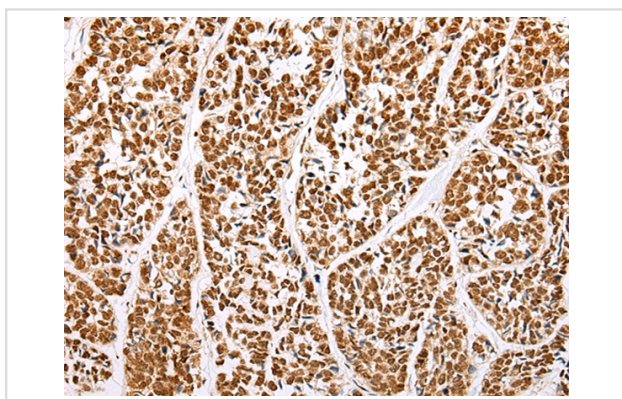
## Description

Product Name	ABCA1 Antibody
Host Species	Rabbit
Clonality	Polyclonal
Purification	Antigen affinity purification.
Applications	IHC
Species Reactivity	Hu
Specificity	The antibody detects endogenous levels of total ABCA1 protein.
Immunogen Description	Synthetic peptide of human ABCA1
Target Name	ABCA1
Other Names	TGD; ABC1; CERP; ABC-1; HDLDT1
Accession No.	Swiss-Prot#: O95477 Gene ID: 19
Uniprot	O95477
GeneID	19;
Concentration	2mg/ml
Formulation	Rabbit IgG in pH7.4 PBS, 0.05% NaN <sub>3</sub> , 40% Glycerol.
Storage	Store at -20°C

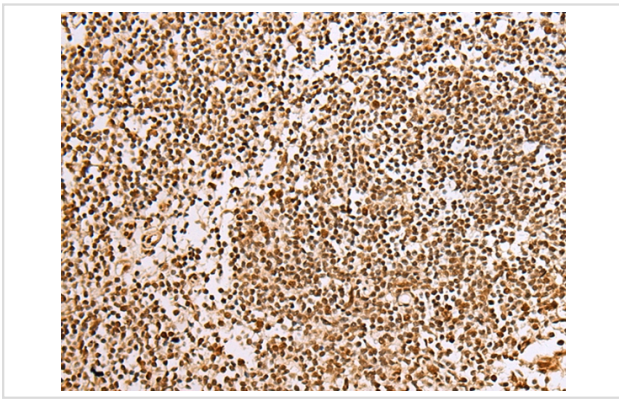
## Application Details

Immunohistochemistry: 1:20-1:100

## Images



Immunohistochemical analysis of paraffin-embedded Human esophagus cancer tissue using #43463 at dilution 1/35.



Immunohistochemical analysis of paraffin-embedded Human tonsil tissue using #43463 at dilution 1/35.

## Background

The membrane-associated protein encoded by this gene is a member of the superfamily of ATP-binding cassette (ABC) transporters. ABC proteins transport various molecules across extra- and intracellular membranes. ABC genes are divided into seven distinct subfamilies (ABC1, MDR/TAP, MRP, ALD, OABP, GCN20, White). This protein is a member of the ABC1 subfamily. Members of the ABC1 subfamily comprise the only major ABC subfamily found exclusively in multicellular eukaryotes. With cholesterol as its substrate, this protein functions as a cholesterol efflux pump in the cellular lipid removal pathway. Mutations in this gene have been associated with Tangier's disease and familial high-density lipoprotein deficiency.

Note: This product is for in vitro research use only