

ABCB10 Antibody

Catalog No: #43466

Orders: order@signalwayantibody.comSupport: tech@signalwayantibody.com

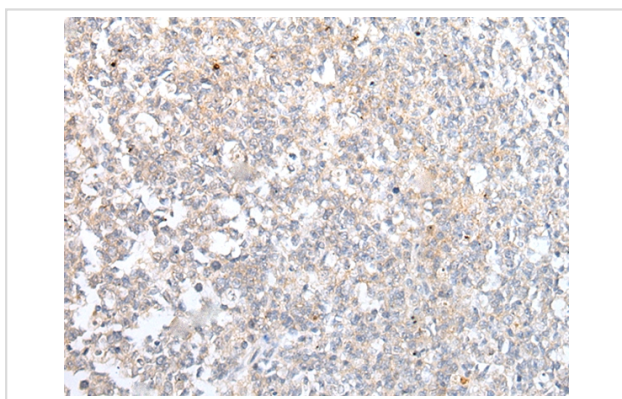
Description

Product Name	ABCB10 Antibody
Host Species	Rabbit
Clonality	Polyclonal
Purification	Antigen affinity purification.
Applications	IHC
Species Reactivity	Hu
Specificity	The antibody detects endogenous levels of total ABCB10 protein.
Immunogen Description	Synthetic peptide of human ABCB10
Target Name	ABCB10
Other Names	M-ABC2; MTABC2; EST20237
Accession No.	Swiss-Prot#: Q9NRK6 Gene ID: 23456
Uniprot	Q9NRK6
GeneID	23456;
Concentration	0.6mg/ml
Formulation	Rabbit IgG in pH7.4 PBS, 0.05% NaN ₃ , 40% Glycerol.
Storage	Store at -20°C

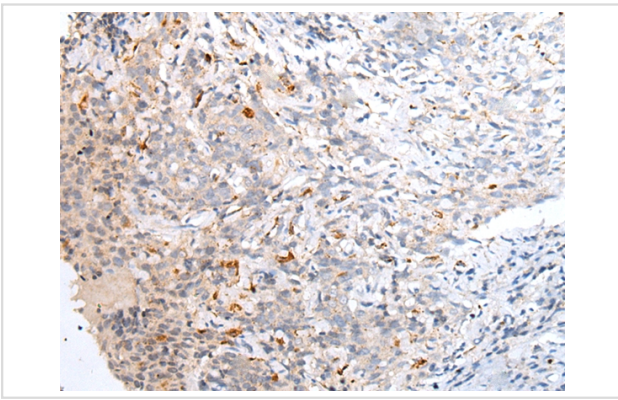
Application Details

Immunohistochemistry: 1:20-1:100

Images



Immunohistochemical analysis of paraffin-embedded Human tonsil tissue using #43466 at dilution 1/20.



Immunohistochemical analysis of paraffin-embedded Human cervical cancer tissue using #43466 at dilution 1/20.

Background

The membrane-associated protein encoded by this gene is a member of the superfamily of ATP-binding cassette (ABC) transporters. ABC proteins transport various molecules across extra- and intra-cellular membranes. ABC genes are divided into seven distinct subfamilies (ABC1, MDR/TAP, MRP, ALD, OABP, GCN20, White). This protein is a member of the MDR/TAP subfamily. Members of the MDR/TAP subfamily are involved in multidrug resistance. The function of this mitochondrial protein is unknown.?

Note: This product is for in vitro research use only