

GANAB Antibody

Catalog No: #43468

Orders: order@signalwayantibody.com

Support: tech@signalwayantibody.com

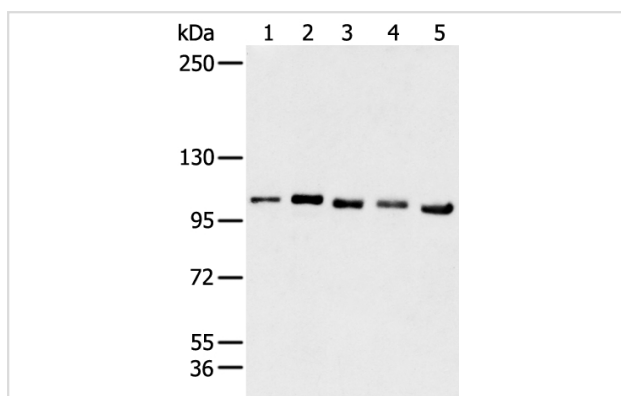
Description

Product Name	GANAB Antibody
Host Species	Rabbit
Clonality	Polyclonal
Purification	Antigen affinity purification.
Applications	WB
Species Reactivity	Hu
Specificity	The antibody detects endogenous levels of total GANAB protein.
Immunogen Type	peptide
Immunogen Description	Synthetic peptide of human GANAB
Target Name	GANAB
Other Names	G2AN; GLUII
Accession No.	Swiss-Prot#: Q14697?Gene ID: 23193
Uniprot	Q14697
GeneID	23193;
Calculated MW	107kd
Concentration	1.3mg/ml
Formulation	Rabbit IgG in pH7.4 PBS, 0.05% NaN ₃ , 40% Glycerol.
Storage	Store at -20°C

Application Details

Western blotting: 1:200-1:1000

Images



Gel: 6%SDS-PAGE

Lysate: 40 µg

Lane 1-5: HeLa, A431, Hepg-2 and Raji cell

Primary antibody: 1/200 dilution

Secondary antibody: Goat anti rabbit IgG at 1/8000 dilution

Exposure time: 15 seconds

Background

Trimming of glucoses from N-linked core glycans on newly synthesized glycoproteins occurs sequentially through the action of Glucosidases I and II in the endoplasmic reticulum (ER). Glucosidase II is an ER-localized enzyme that contains a and b subunits (Glucosidase IIa and Glucosidase IIb) which

form a defined heterodimeric complex. Glucosidase IIa is the catalytic core of the enzyme and can function independently of the b subunit. The sequence of Glucosidase IIb encodes protein rich in glutamic and aspartic acid with a putative ER retention signal (HDEL) at the C-terminus.?

Note: This product is for in vitro research use only