

SLC4A3 Antibody

Catalog No: #43470

Orders: order@signalwayantibody.com

Support: tech@signalwayantibody.com

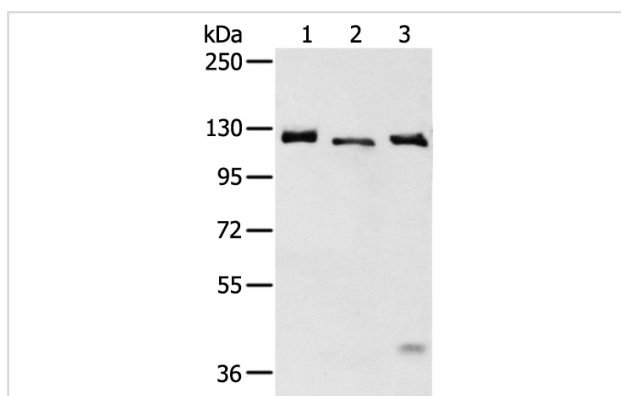
Description

Product Name	SLC4A3 Antibody
Host Species	Rabbit
Clonality	Polyclonal
Purification	Antigen affinity purification.
Applications	WB
Species Reactivity	Hu Ms Rt
Specificity	The antibody detects endogenous levels of total SLC4A3 protein.
Immunogen Type	peptide
Immunogen Description	Synthetic peptide of human SLC4A3
Target Name	SLC4A3
Other Names	AE3; SLC2C
Accession No.	Swiss-Prot#: P48751 Gene ID: 6508
Uniprot	P48751
GeneID	6508;
Calculated MW	136kd
Concentration	0.9mg/ml
Formulation	Rabbit IgG in pH7.4 PBS, 0.05% NaN ₃ , 40% Glycerol.
Storage	Store at -20°C

Application Details

Western blotting: 1:200-1:1000

Images



Gel: 6%SDS-PAGE

Lysate: 40 µg

Lane 1-3: A431 and TM4 cell lysate + Human fetal brain tissue

Primary antibody: 1/200 dilution

Secondary antibody: Goat anti rabbit IgG at 1/8000 dilution

Exposure time: 90 seconds

Background

Plasma membrane anion exchange protein of wide distribution. Mediates at least a part of the Cl⁻/HCO₃⁻ exchange in cardiac myocytes. Both BAE3 and CAE3 forms transport Cl⁻.

Note: This product is for in vitro research use only