

## IRF4 Antibody

Catalog No: #43509

Orders: order@signalwayantibody.com

Support: tech@signalwayantibody.com

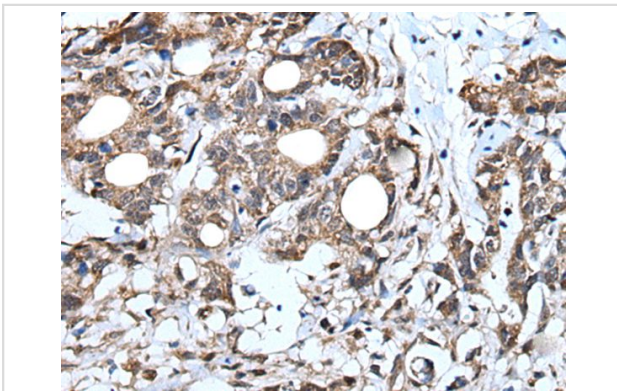
## Description

Product Name	IRF4 Antibody
Host Species	Rabbit
Clonality	Polyclonal
Purification	Antigen affinity purification
Applications	IHC
Species Reactivity	Hu
Specificity	The antibody detects endogenous levels of total IRF4 protein.
Immunogen Type	protein
Immunogen Description	Fusion protein of human IRF4
Target Name	IRF4
Other Names	MUM1; LSIRF; SHEP8; NF-EM5
Accession No.	Swiss-Prot#: Q15306NCBI Gene ID: 3662
Uniprot	Q15306
GeneID	3662;
Concentration	1mg/ml
Formulation	Rabbit IgG in pH7.4 PBS, 0.05% NaN <sub>3</sub> , 40% Glycerol.
Storage	Store at -20°C

## Application Details

Immunohistochemistry: 1: 30-150

## Images



The image is immunohistochemistry of paraffin-embedded Human gastric cancer tissue using IRF4 Antibody at dilution 1/40. (Original magnification: x200)

## Background

The protein encoded by this gene belongs to the IRF (interferon regulatory factor) family of transcription factors, characterized by a unique tryptophan pentad repeat DNA-binding domain. The IRFs are important in the regulation of interferons in response to infection by virus, and in the regulation of interferon-inducible genes. This family member is lymphocyte specific and negatively regulates Toll-like-receptor (TLR) signaling that is central to the activation of innate and adaptive immune systems. A chromosomal translocation involving this gene and the IgH locus, t(6;14)(p25;q32), may be a

cause of multiple myeloma. Alternatively spliced transcript variants have been found for this gene.?

---

Note: This product is for in vitro research use only