

LCAT Antibody

Catalog No: #43511

Orders: order@signalwayantibody.comSupport: tech@signalwayantibody.com

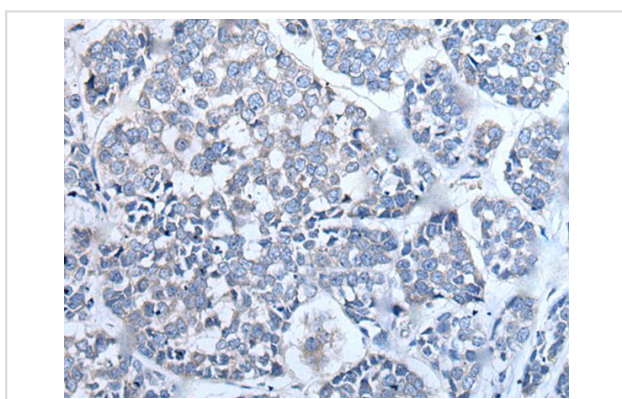
Description

Product Name	LCAT Antibody
Host Species	Rabbit
Clonality	Polyclonal
Purification	Antigen affinity purification
Applications	IHC
Species Reactivity	Hu
Specificity	The antibody detects endogenous levels of total LCAT protein.
Immunogen Type	protein
Immunogen Description	Fusion protein of human LCAT
Target Name	LCAT
Accession No.	Swiss-Prot#: P04180NCBI Gene ID: 3931
Uniprot	P04180
GeneID	3931;
Concentration	0.2mg/ml
Formulation	Rabbit IgG in pH7.4 PBS, 0.05% NaN ₃ , 40% Glycerol.
Storage	Store at -20°C

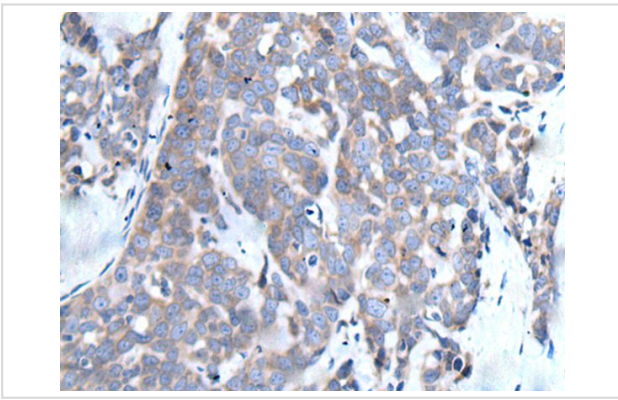
Application Details

Immunohistochemistry: 1: 20-100

Images



The image is immunohistochemistry of paraffin-embedded Human esophagus cancer tissue using LCAT Antibody at dilution 1/30. (Original magnification: x200)



The image is immunohistochemistry of paraffin-embedded Human thyroid cancer tissue using LCAT Antibody at dilution 1/30. (Original magnification: x200)

Background

This gene encodes the extracellular cholesterol esterifying enzyme, lecithin-cholesterol acyltransferase. The esterification of cholesterol is required for cholesterol transport. Mutations in this gene have been found to cause fish-eye disease as well as LCAT deficiency.

Note: This product is for in vitro research use only