

## TUBB Antibody

Catalog No: #43533

Orders: order@signalwayantibody.com

Support: tech@signalwayantibody.com

## Description

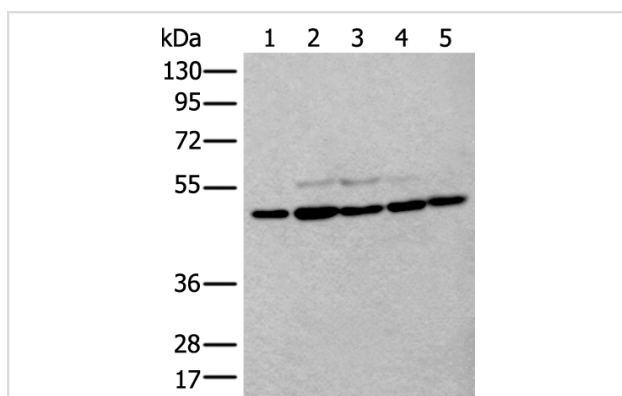
Product Name	TUBB Antibody
Host Species	Rabbit
Clonality	Polyclonal
Purification	Antigen affinity purification
Applications	IHC WB
Species Reactivity	Hu
Specificity	The antibody detects endogenous levels of total TUBB protein.
Immunogen Description	Full length fusion protein
Target Name	TUBB
Other Names	M40; TUBB1; TUBB5; CDCBM6; OK/SW-cl.56
Accession No.	Swiss-Prot#: P07437NCBI Gene ID: 203068
Uniprot	P07437
GeneID	203068;
Calculated MW	50kd
Concentration	0.7mg/ml
Formulation	Rabbit IgG in pH7.4 PBS, 0.05% NaN <sub>3</sub> , 40% Glycerol.
Storage	Store at -20°C

## Application Details

Western blotting: 1:200-1000

Immunohistochemistry: 1: 20-100

## Images



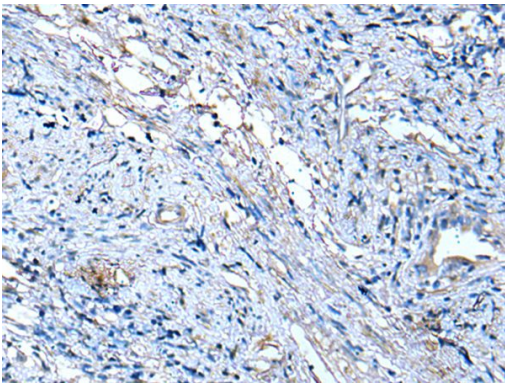
Gel: 8%SDS-PAGE

Lysate: 40 µg, Lane 1-5: NIH/3T3B£B-HEPG2B£B-Hela and 293T cellB£B-Mouse brain tissue lysates,

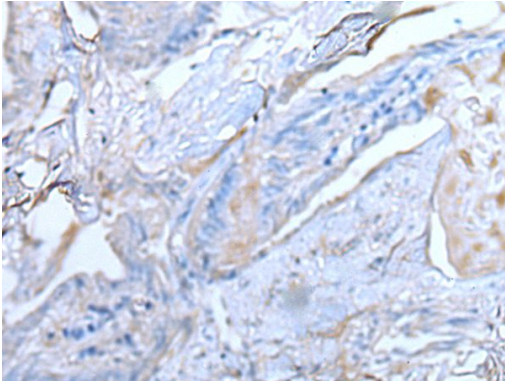
Primary antibody:TUBB antibody at dilution 1/300,

Secondary antibody: Goat anti rabbit IgG at 1/8000 dilution,

Exposure time: 10 seconds



The image on the left is immunohistochemistry of paraffin-embedded Human cervical cancer tissue using TUBB Antibody at dilution 1/30, on the right is treated with fusion protein. (Original magnification: x200)



The image on the left is immunohistochemistry of paraffin-embedded Human thyroid cancer tissue using TUBB Antibody at dilution 1/30, on the right is treated with fusion protein. (Original magnification: x200)

## Background

This gene encodes a beta tubulin protein. This protein forms a dimer with alpha tubulin and acts as a structural component of microtubules. Mutations in this gene cause cortical dysplasia, complex, with other brain malformations 6. Alternative splicing results in multiple splice variants. There are multiple pseudogenes for this gene on chromosomes 1, 6, 7, 8, 9, and 13.

Note: This product is for in vitro research use only