

## UBA6 Antibody

Catalog No: #43598

Orders: [order@signalwayantibody.com](mailto:order@signalwayantibody.com)Support: [tech@signalwayantibody.com](mailto:tech@signalwayantibody.com)

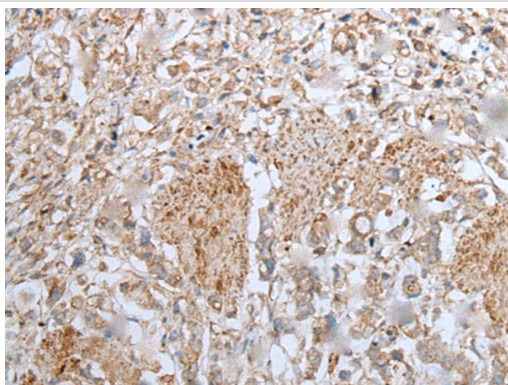
## Description

Product Name	UBA6 Antibody
Host Species	Rabbit
Clonality	Polyclonal
Purification	Antigen affinity purification
Applications	IHC
Species Reactivity	Hu
Specificity	The antibody detects endogenous levels of total UBA6 protein.
Immunogen Type	protein
Immunogen Description	Fusion protein of human UBA6
Target Name	UBA6
Other Names	E1-L2; MOP-4; UBE1L2
Accession No.	Swiss-Prot#: A0AVT1NCBI Gene ID: 55236
Uniprot	A0AVT1
GeneID	55236;
Concentration	0.5mg/ml
Formulation	Rabbit IgG in pH7.4 PBS, 0.05% NaN <sub>3</sub> , 40% Glycerol.
Storage	Store at -20°C

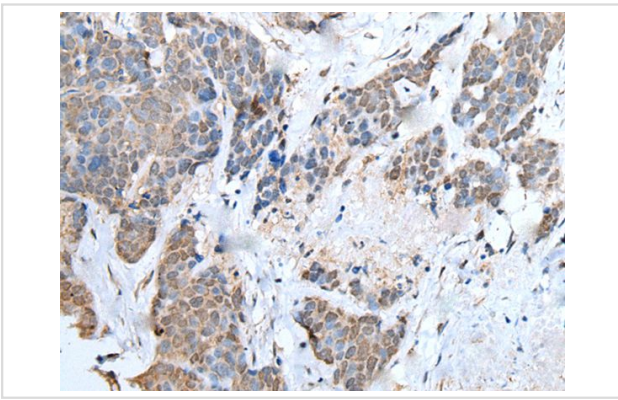
## Application Details

Immunohistochemistry: 1: 20-100

## Images



The image on the left is immunohistochemistry of paraffin-embedded Human gastric cancer tissue using UBA6 Antibody at dilution 1/30, on the right is treated with fusion protein. (Original magnification: x200)



The image on the left is immunohistochemistry of paraffin-embedded Human thyroid cancer tissue using UBA6 Antibody at dilution 1/30, on the right is treated with fusion protein. (Original magnification: x200)

## Background

Modification of proteins with ubiquitin (UBB; MIM 191339) or ubiquitin-like proteins controls many signaling networks and requires a ubiquitin-activating enzyme (E1), a ubiquitin conjugating enzyme (E2), and a ubiquitin protein ligase (E3). UBE1L2 is an E1 enzyme that initiates the activation and conjugation of ubiquitin-like proteins (Jin et al., 2007 [PubMed 17597759]).

Note: This product is for in vitro research use only